



WAYMARK[®]

FENCE AND RAIL ACCESSORIES

2025 CATALOG

ACCESSORIES

Updated 12-05-24

24-340- M1116-24W

Waymark: 877-652-6118 | www.WaymarkProducts.com

Availability, specification and profile dimensions are subject to change without notice. Check with manufacturer before ordering.

Table of Contents

3	Waymark Company Statement	
4	Item Key	
6	Gorilla Caps & Tops	
7	Picket Caps	
12	Fence Accessories	
	Lattice	12
	End Caps	13
	Hole Plugs	14
	Gate Pockets	15
	Rail Mounts	16
17	Trim Rings & Foot Block	
20	Gorilla Guard Rail Systems	
	Summit Rail	20
	Summit Deck-Over	22
	Summit 2 Rail	24
	Summit Convex Rail	25
	Nexus Rail	25
	Nexus 2" x 3-1/2" Rail	28
29	Gorilla Grab Rail	
32	Gorilla Solar Lighting	
36	Gorilla Matrix	
38	Gorilla Mounts	
41	Miscellaneous	
42	Decking	
43	Index	
45	Notes	
46	Terms and Conditions	



WAYMARK ACCESSORIES

COMPANY STATEMENT

Waymark Products LLC is dedicated to delivering high quality products and excellent service to our customers without exception. We understand the importance of our customers' success in the Fence, Deck, Railing and Outdoor Living Products markets. We value our relationships with our customers and pledge that we will operate at the highest level of integrity.

CUSTOMER ACCOUNTS

All sales are subject to Waymark's Terms and Conditions which are available at the end of this catalog and at www.waymarkproducts.com. Waymark Products LLC only sells wholesale and all sales require establishing a Trade Account. Contact a Waymark Sales Representative about initiating the process for the establishment of a Trade Account with Waymark. Prices and terms are subject to change without notice.

LIMITED WARRANTY

Waymark warrants that the products we manufacture are free of defects in materials and workmanship as described in our published warranties. Products distributed by Waymark, but not manufactured by Waymark, are covered only under the original manufacturer's warranty. Additional warranty information is available at www.waymarkproducts.com.

TERMS AND CONDITIONS OF SALE ARE SPECIFIED WITH ORDER CONFIRMATION AND DETAILED ON THE FRONT AND BACK OF EVERY INVOICE.





At Your Finger Tips!



- Available on Apple or Android
- Download Catalogs, Warranties, Technical Data, Brochures, Flyers and more!
- View Colors & Photos
- View Products by Profiles
- View Install Diagrams
- Easy to use for Suppliers, Contractors and Homeowners!

ITEM KEY EXPLANATION

COLOR CODE

W – White T - Tan BK - Black (coming soon) A - Adobe CG - Chai Gray
MW - Mocha Walnut GT - Green Teak AL - Aspen Latte
AG - Ash Gray (see below) DG - Dark Gray LG - Light Gray

Quick Tip: Understanding our Accessory part numbers

Each item number is designated by class, dimensions, part description and color.
 For example: our 5” Pyramid cap in white (C55PYRAW) is broken out as follows:

Class: Cap Dimension: 5” x 5” Description: Pyramid Color: White

C | 55 | PYRA | W

Here is another example of our 7/8” x 3” Dog Ear picket cap in adobe (P783DEA):

Class: Picket Cap Dimension: 7/8” x 3” Description: Dog Ear Color: Adobe

P | 783 | DE | A

*** Ash Gray is available only in the following Waymark Parts 2025:**

C55PYRA
5” External Pyramid Cap

HP5/8
5/8” Hole Plug

EEC235
2x3-1/2” External End Cap

C55NE
5” New England Cap

**All Ash Gray and Honey Maple orders are considered special orders.
 Stock will not be produced in any Ash Gray or Honey Maple profiles.**



Why try to fit a **SQUARE PEG** into a **ROUND HOLE?**



**HOMELAND AND WAYMARK
ARE THE
"PERFECT FIT & MATCH".**

Homeland and Waymark work together to manufacture vinyl systems.

Waymark's products are designed for a "perfect fit" to all Homeland's profiles. Other companies manufacture their accessories with an oversize corner radius limiting the range of compatibility to other profiles. By combining Homeland profiles with Waymark accessories your project will look beautiful and will not stick out as "pieced-together".

Systems are tested for ICC Building Code compliance.

Homeland and Waymark have invested into the safety of products by extensively testing Fence, Deck and Rail systems for International Building Code compliance. This is backed by our third party audits. We believe that your project should not be compromised with profiles and accessories that have not been tested as a system.

Homeland and Waymark are color matched

Are you tired of buying accessories that don't match perfectly with your profiles? Waymark products, through quality control systems, are virtually color matched to Homeland's profiles. Your caps, lighting, brackets, lattice, column, post, and pickets will be a perfect color match to all Homeland profiles.

That's why we say, Homeland and Waymark sell systems!



800-999-6813

info@homelandvinyl.com

HomelandVinyl.com



WAYMARK®
FENCE AND RAIL ACCESSORIES

877-652-6118

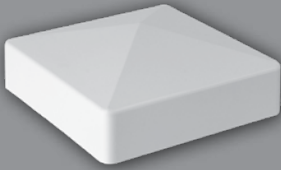
sales@waymarkproducts.com

Waymark Products, LLC

WaymarkProducts.com

** Homeland Vinyl Products' Tennessee plant is ISO 9001 certified.
Summit® is a registered trademark of Waymark Products LLC.

GORILLA™ CAPS - POST CAPS
 External Pyramid Caps - Internal Pyramid Caps

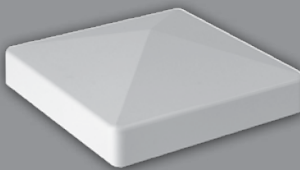


4" EXTERNAL PVC PYRAMID CAP

PART NUMBER: C44PYRA + W, T, A,
 MW, LG, CG, GT, DG
 STOCK COLORS: WHITE, TAN, ADOBE,
 MOCHA WALNUT, LIGHT GRAY, CHAI GRAY,
 GREEN TEAK, DARK GRAY
 BLACK AVAILABLE SOON!

DIMENSIONS: 4" x 4" x 1.46" H
 INSIDE CORNER RADIUS: 0.165"
 CAP LIP: 0.868"

BOX QTY:
 WTA ; 204
 BOX WEIGHT: 32 LBS.
 PALLET QTY: 16 BOXES - 3264 PCS.
 Homewood & Dark Gray: 32
 BOX WEIGHT: 5 LBS.

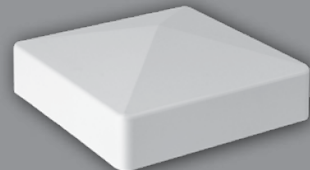


4" EXTERNAL SHORT LIP PVC PYRAMID CAP

PART NUMBER: C44SHRT + W, T, A
 STOCK COLORS: WHITE, TAN, ADOBE

DIMENSIONS: 4" x 4" x 1.35" H
 INSIDE CORNER RADIUS: 0.165"
 CAP LIP: 0.537"

BOX QTY: 120
 BOX WEIGHT: 13 LBS.

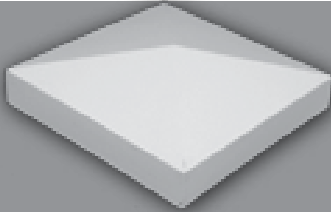


5" EXTERNAL PVC PYRAMID CAP

PART NUMBER: C55PYRA + W, T, A,
 MW, LG, CG, GT, DG
 STOCK COLORS: WHITE, TAN, ADOBE, MOCHA
 WALNUT, LIGHT GRAY, CHAI GRAY,
 GREEN TEAK, DARK GRAY
 BLACK AVAILABLE SOON!

DIMENSIONS: 5" x 5" x 1.875" H
 INSIDE CORNER RADIUS: 0.1719" (11/64")
 CAP LIP: 1" H

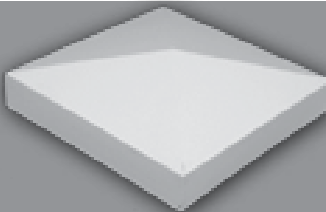
BOX QTY:
 WTA ; 136
 BOX WEIGHT: 29 LBS.
 PALLET QTY: 20 BOXES - 2720 PCS.
 Homewood & Dark Gray: 40
 BOX WEIGHT: 8 LBS.
 PALLET QTY: 60 BOXES - 2400 PCS.



6" EXTERNAL PVC PYRAMID CAP

PART NUMBER: C66PYRA +
 W, T, A
 STOCK COLORS: WHITE, TAN, ADOBE
 BLACK AVAILABLE SOON!

BOX QTY: 81
 BOX WEIGHT: 28 LBS.

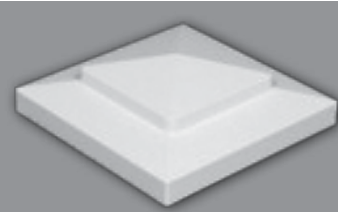


6 1/2" EXTERNAL PVC PYRAMID CAP

PART NUMBER: C65PYRA + W, T, A
 STOCK COLORS: WHITE, TAN, ADOBE

DIMENSIONS: 6.5" x 6.5"

BOX QTY: 30
 BOX WEIGHT: 15 LBS.



8" EXTERNAL PVC PYRAMID CAP

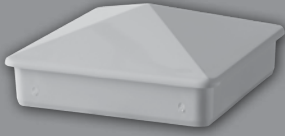
PART NUMBER: C88HORSE + W, T, A
 STOCK COLORS: WHITE, TAN, ADOBE

DIMENSIONS: 8" x 8"

BOX QTY: 12
 BOX WEIGHT: 7 LBS.

GORILLA™ CAPS - POST CAPS

Internal Pyramid Caps - New England Caps - Classic Caps - Gothic Caps



4" INTERNAL PVC PYRAMID CAP

PART NUMBER: C44IPYRA + W, T, A
STOCK COLORS: WHITE, TAN, ADOBE

DIMENSIONS: 4" x 4" x 1.55" H
OUTSIDE CORNER RADIUS: 0.25"
INTERNAL FIT OF CAP: 0.75" H

BOX QTY: 192
BOX WEIGHT: 33 LBS.

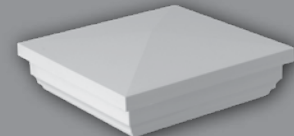


5" INTERNAL PVC PYRAMID CAP

PART NUMBER: C55IPYRA + W, T, A
STOCK COLORS: WHITE, TAN, ADOBE

DIMENSIONS: 5" x 5" x 1.46" H
OUTSIDE CORNER RADIUS: 0.25"
INTERNAL FIT OF CAP: 0.74" H

BOX QTY: 144
BOX WEIGHT: 41 LBS.



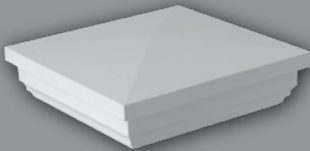
4" PVC NEW ENGLAND CAP

PART NUMBER: C44NE + W, T, A,
MW, CG, GT
STOCK COLORS: WHITE, TAN, ADOBE, MOCHA
WALNUT, CHAI GRAY, GREEN TEAK
BLACK AVAILABLE SOON!

DIMENSIONS: 4" x 4" x 1.78" H
INSIDE CORNER RADIUS: 0.125"
CAP LIP: 1"

BOX QTY: 28
BOX WEIGHT: 11 LBS.

PALLET QTY: 60 BOXES - 1680 PCS.
MATCHING TRIM ITEM # TR44NE



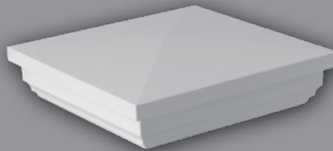
5" PVC NEW ENGLAND CAP

PART NUMBER: C55NE + W, T, A,
MW, LG, CG, GT, DG
STOCK COLORS: WHITE, TAN, ADOBE,
MOCHA WALNUT, LIGHT GRAY, CHAI GRAY,
GREEN TEAK, DARK GRAY
BLACK AVAILABLE SOON!

DIMENSIONS: 5" x 5" x 2.192" H
INSIDE CORNER RADIUS: 0.156"
CAP LIP: 1.30" H

BOX QTY: 24
BOX WEIGHT: 16 LBS.

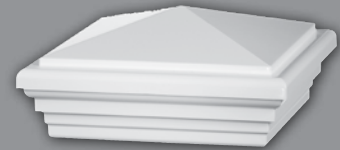
PALLET QTY: 45 BOXES - 1080 PCS.
MATCHING TRIM ITEM # TR55NE



6" PVC NEW ENGLAND CAP

PART NUMBER: C66NE +
W, T, A
STOCK COLORS: WHITE, TAN, ADOBE
BLACK AVAILABLE SOON!

BOX QTY: 32
BOX WEIGHT: 24 LBS.



4" PVC CLASSIC CAP

(COMBINE WITH WAYPOINT TOPS TO FURTHER
ENHANCE APPEARANCE)

PART NUMBER: C44CLS + W, T, A,
MW, CG, GT
STOCK COLORS: WHITE, TAN, ADOBE, MOCHA
WALNUT, CHAI GRAY, GREEN TEAK

DIMENSIONS: 4" x 4" x 2.55" H
INSIDE CORNER RADIUS: 0.125"
CAP LIP: 1.025"

BOX QTY: 24
BOX WEIGHT: 12 LBS.

PALLET QTY: 60 BOXES - 1440 PCS.
MATCHING TRIM ITEM # TR44CLS

GORILLA™ CAPS - POST CAPS

Gothic Caps - Dental Caps



5" PVC CLASSIC CAP

(COMBINE WITH WAYPOINT TOPS TO FURTHER ENHANCE APPEARANCE)

PART NUMBER: C55CLS + W, T, A, MW, CG, GT
 STOCK COLORS: WHITE, TAN, ADOBE, MOCHA WALNUT, CHAI GRAY, GREEN TEAK

DIMENSIONS: 5" x 5" x 2.74" H
 INSIDE CORNER RADIUS: 0.188"
 CAP LIP: 1.28"

BOX QTY: 24
 BOX WEIGHT: 17 LBS.

PALLET QTY: 45 BOXES - 1080 PCS.
 MATCHING TRIM ITEM # TR55CLS



4" PVC GOTHIC CAP

PART NUMBER: C44GOTH + W, T, A, MW
 STOCK COLORS: WHITE, TAN, ADOBE, MOCHA WALNUT

DIMENSIONS: 4" x 4" x 7.83" H
 INSIDE CORNER RADIUS: 0.061"
 CAP LIP: 1.36"

BOX QTY: 45
 BOX WEIGHT: 25 LBS.

PALLET QTY: 24 BOXES - 1080 PCS.



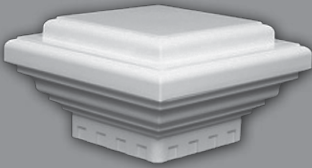
5" PVC GOTHIC CAP

PART NUMBER: C55GOTH + W, T, A, MW
 STOCK COLORS: WHITE, TAN, ADOBE, MOCHA WALNUT

DIMENSIONS: 5" x 5" x 9.64" H
 INSIDE CORNER RADIUS: 0.031"
 CAP LIP: 1.57"

BOX QTY: 48
 BOX WEIGHT: 44 LBS.

PALLET QTY: 12 BOXES - 576 PCS.



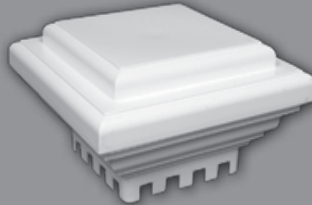
6" PVC DENTAL CAP

PART NUMBER: C66DENT + W, T, A
 STOCK COLORS: WHITE, TAN, ADOBE

DIMENSIONS: 6" x 6"

BOX QTY: 12
 BOX WEIGHT: 30 LBS.

MATCHING TRIM
 ITEM # TR66DENT



6 1/2" PVC DENTAL CAP

PART NUMBER: C65DENT + W, T, A
 STOCK COLORS: WHITE, TAN, ADOBE

DIMENSIONS: 6.5" x 6.5"

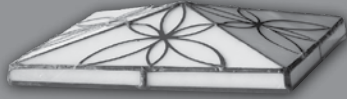
BOX QTY: 12
 BOX WEIGHT: 32 LBS.

MATCHING TRIM
 ITEM # TR6565DENT

Gorilla™ is a trademark of Homeland Vinyl Products, Inc. Waymark is a registered trademark of Waymark Products, LLC. Waypoint is an registered trademark of Waymark Products, LLC.

WAYPOINT® STAINED GLASS TOPS

Waypoint® Tops



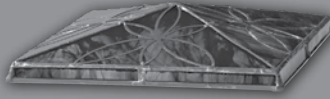
4" AND 5" PEARL WAYPOINT® TOPS

4" - PART NUMBER: CG44TOPPRL
5" - PART NUMBER: CG55TOPPRL

DIMENSIONS: TOP FITS ON OUR
CLASSIC CAP

BOX QTY: 12
BOX WEIGHT: 3 LBS.

* See note below.



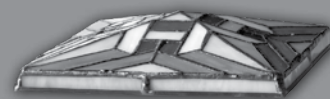
4" AND 5" CHESTNUT WAYPOINT® TOPS

4" - PART NUMBER: CG44TOPCST
5" - PART NUMBER: CG55TOPCST

DIMENSIONS: TOP FITS ON OUR
CLASSIC CAP

BOX QTY: 12
BOX WEIGHT: 3 LBS.

* See note below.



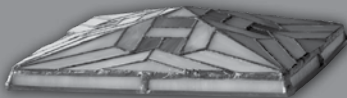
4" AND 5" FOREST WAYPOINT® TOPS

4" - PART NUMBER: CG44TOPFOR
5" - PART NUMBER: CG55TOPFOR

DIMENSIONS: TOP FITS ON OUR
CLASSIC CAP

BOX QTY: 12
BOX WEIGHT: 3 LBS.

* See note below.



4" AND 5" HARVEST WAYPOINT® TOPS

4" - PART NUMBER: CG44TOPHAR
5" - PART NUMBER: CG55TOPHAR

DIMENSIONS: TOP FITS ON OUR
CLASSIC CAP

BOX QTY: 12
BOX WEIGHT: 3 LBS.

* See note below.



4" AND 5" SUNFLOWER WAYPOINT® TOPS

4" - PART NUMBER: CG44TOPSNF
5" - PART NUMBER: CG55TOPSNF

DIMENSIONS: TOP FITS ON OUR
CLASSIC CAP

BOX QTY: 12
BOX WEIGHT: 3 LBS.

* See note below.



4" AND 5" GRAPE WAYPOINT® TOPS

4" - PART NUMBER: CG44TOPGRP
5" - PART NUMBER: CG55TOPGRP

DIMENSIONS: TOP FITS ON OUR
CLASSIC CAP

BOX QTY: 12
BOX WEIGHT: 3 LBS.

* See note below.

* GLASS TOPS GLUE TO CLASSIC CAP BY APPLYING A SMALL AMOUNT OF SILICONE ADHESIVE TO ALL 4 CORNERS. PLEASE SEE WWW.WAYMARKPRODUCTS.COM FOR FURTHER INSTRUCTION.

Gorilla™ is a trademark of Homeland Vinyl Products, Inc. Waymark is a registered trademark of Waymark Products, LLC.
Waypoint is an registered trademark of Waymark Products, LLC.

GORILLA™ CAPS - PICKET CAPS

Dog Ear - Spade - Sharp - Arrow Head



7/8" x 1 1/2" PVC SPADE PICKET CAP

PART NUMBER: P7815S + W, T, A
STOCK COLORS: WHITE, TAN, ADOBE

DIMENSIONS:
7/8" W x 1.5" L x 1.5" H
OUTSIDE CORNER RADIUS: 0.125"
INTERNAL FIT OF CAP: 0.9" H

BOX QTY: 500
BOX WEIGHT: 14 LBS.

FITS WALL THICKNESS OF:
.065 - .075



1 3/8" PVC SHARP PICKET CAP

PART NUMBER: P138SH +
W, T, A, MW, CG, GT
STOCK COLORS: WHITE, TAN, ADOBE, MOCHA WALNUT, CHAI GRAY, GREEN TEAK

DIMENSIONS: 1 3/8" x 1 3/8" x 1.25" H
OUTSIDE CORNER RADIUS: 0.125"
INTERNAL FIT OF CAP: 0.5" H

BOX QTY: 500
BOX WEIGHT: 11 LBS.

FITS WALL THICKNESS OF:
.065 - .075



1 1/2" PVC SHARP PICKET CAP

PART NUMBER: P1515SH +
W, T, A, MW, LG, DG
STOCK COLORS: WHITE, TAN, ADOBE, MOCHA WALNUT, LIGHT GRAY, DARK GRAY

DIMENSIONS: 1.5" x 1.5" x 1.40" H
OUTSIDE CORNER RADIUS: 0.109"
INTERNAL FIT OF CAP: 0.60" H

BOX QTY: 500
BOX WEIGHT: 11 LBS.

FITS WALL THICKNESS OF:
.065 - .075



7/8" x 3" PVC DOG EAR PICKET CAP

PART NUMBER: P783DE +
W, T, A, MW, CG, GT, LG, DG
STOCK COLORS: WHITE, TAN, ADOBE, MOCHA WALNUT, CHAI GRAY, GREEN TEAK, LIGHT GRAY, DARK GRAY

DIMENSIONS: 7/8" W x 3" L x 1" H
OUTSIDE CORNER RADIUS: 0.125"
INTERNAL FIT OF CAP: 0.8" H

BOX QTY: 300
BOX WEIGHT: 13 LBS.

PALLET QTY: 72 BOXES - 21,600 PCS.
FITS WALL THICKNESS OF: .070-.080



7/8" x 3" PVC SPADE PICKET CAP

PART NUMBER: P783S +
W, T, A, LG, DG
STOCK COLORS: WHITE, TAN, ADOBE, LIGHT GRAY, DARK GRAY

DIMENSIONS: 7/8" W x 3" L x 2.02" H
OUTSIDE CORNER RADIUS: 0.125"
INTERNAL FIT OF CAP: 0.8" H

BOX QTY: 250
BOX WEIGHT: 13 LBS.

PALLET QTY: 72 BOXES - 18,000 PCS.
FITS WALL THICKNESS OF: .070-.080



1" x 1" ARROWHEAD PICKET CAP

PART NUMBER: P11A + W, BK
STOCK COLORS: WHITE, BLACK

DIMENSIONS: 1" x 1"

BOX QTY: 200
BOX WEIGHT: 9 LBS

GORILLA™ CAPS - PICKET CAPS

Boyscout - Gothic Picket



1" x 1" BOYSCOUT PICKET CAP

PART NUMBER: P11B + W, BK
STOCK COLORS: WHITE, BLACK

DIMENSIONS: 1" x 1"

BOX QTY: 200
BOX WEIGHT: 10 LB



1 3/8" PVC GOTHIC PICKET SQUARE EXTERNAL

PART NUMBER: P138GOTH + W, T, A
STOCK COLORS: WHITE, TAN, ADOBE

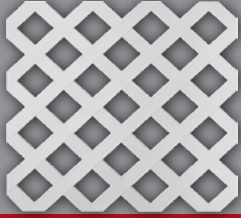
DIMENSIONS:
1 3/8" x 1 3/8" x 2.57" H

INSIDE CORNER RADIUS: .031"
CAP LIP: .43"

BOX QTY: 100
BOX WEIGHT: 7 LBS.

VINYL LATTICE

Classic Lattice, Privacy Lattice, Pre-Cut Lattice

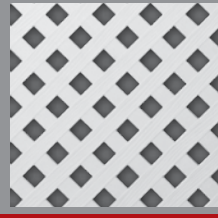


4' x 8' CLASSIC LATTICE

PART NUMBER: L4X8CLS + W, T, A
STOCK COLORS: WHITE, TAN, ADOBE

DIMENSIONS: 4' x 8'
OPENING: 2 3/4"

PALLET QTY: 50 WHITE,
25 IN COLORS
PALLET WEIGHT: 960 LBS. WHITE, 500 LBS.
IN COLORS

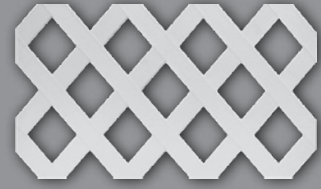


4' x 8' PRIVACY LATTICE

PART NUMBER: L4X8PRV + W, T
STOCK COLORS: WHITE, TAN

DIMENSIONS: 4' x 8'
OPENING: 1 1/16"

PALLET QTY: 50 WHITE,
25 IN COLORS
PALLET WEIGHT: 960 LBS. WHITE, 500 LBS.
IN COLORS

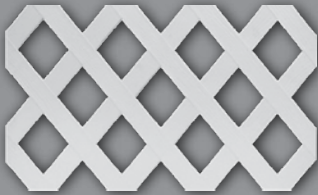


1' x 8' PRE-CUT CLASSIC LATTICE PALLET

PART NUMBER: LPRECUT + W, T, A
STOCK COLORS: WHITE, TAN, ADOBE

DIMENSIONS: 1' x 8'
OPENING: 2 3/4"

PALLET QTY: 200 WHITE,
100 IN COLORS
PALLET WEIGHT: 960 LBS. WHITE, 500 LBS.
IN COLORS



1' x 8' PRE-CUT CLASSIC LATTICE BOXED


PART NUMBER: LCUTBOX + W, T, A
STOCK COLORS: WHITE, TAN, ADOBE

DIMENSIONS: 1' x 8'
OPENING: 2 3/4"

BOX QTY: 16
BOX WEIGHT: 65 LBS.

END CAPS

End Caps




2" x 3 1/2" INTERNAL END CAP

PART NUMBER: EC235 + W, T, A
STOCK COLORS: WHITE, TAN, ADOBE

DIMENSIONS: 2" x 3-1/2"

BOX QTY: 200
BOX WEIGHT: 9 LBS.

FITS WALL THICKNESS OF .090-.110
SURFACE FACE IS FLAT




2" x 3 1/2" EXTERNAL END CAP

PART NUMBER: EEC235 +
W, T, A, MW, LG, CG, GT, DG
STOCK COLORS: WHITE, TAN, ADOBE,
MOCHA WALNUT, LIGHT GRAY, CHAI GRAY,
GREEN TEAK, DARK GRAY

DIMENSIONS: 2" x 3-1/2"
CAP LIP: 9/16" H

BOX QTY: 100
BOX WEIGHT: 6 LBS.

SLIGHT PYRAMID SHAPE ON SURFACE FACE




1 1/2" x 5 1/2" INTERNAL END CAP

PART NUMBER: EC1555 + W, T, A
STOCK COLORS: WHITE, TAN, ADOBE

FITS WALL THICKNESS OF .090-.110
SURFACE FACE IS FLAT

DIMENSIONS: 1 1/2" x 5-1/2"

BOX QTY: 125
BOX WEIGHT: 7.5 LBS.




2" x 6" INTERNAL END CAP

PART NUMBER: EC260 + W, T, A
STOCK COLORS: WHITE, TAN, ADOBE

FITS WALL THICKNESS OF .090-.110
SURFACE FACE IS FLAT

DIMENSIONS: 2" x 6"

BOX QTY: 100
BOX WEIGHT: 8 LBS.



2" x 6" EXTERNAL END CAP

PART NUMBER: EEC260 +
W, T, A, MW, CG, GT, DG
STOCK COLORS: WHITE, TAN, ADOBE,
MOCHA WALNUT, CHAI GRAY, GREEN TEAK,
DARK GRAY

DIMENSIONS: 2" x 6"
CAP LIP: 9/16" H

BOX QTY: 100
BOX WEIGHT: 9.5 LBS.

SLIGHT PYRAMID SHAPE ON SURFACE FACE

Waymark is a registered trademark of Waymark Products, LLC.

HOLE PLUGS, GATE POCKETS

Hole Plugs, Gate Pockets



5/8" HOLE PLUG

PART NUMBER: HP5/8 +
W, T, A, BK, MW, LG, CG, GT, DG
STOCK COLORS: WHITE, TAN, ADOBE, BLACK,
MOCHA WALNUT, LIGHT GRAY, CHAI GRAY,
GREEN TEAK, DARK GRAY

DIAMETER: 5/8"

BOX QTY: 500
BOX WEIGHT: 2 LBS.

FLAT WITH TAPERED EDGE PROVIDES A
FINISHED LOOK. MATTE FINISH PVC PLUG.



1 1/4" HOLE PLUG

PART NUMBER: HP125 +
W, T, A, BK, MW, CG, GT
STOCK COLORS: WHITE, TAN, ADOBE, BLACK,
MOCHA WALNUT, CHAI GRAY, GREEN TEAK

DIAMETER: 1 1/4"

BOX QTY: 200
BOX WEIGHT: 2 LBS.

FLAT WITH TAPERED EDGE PROVIDES A
FINISHED LOOK. MATTE FINISH PVC PLUG.



**1 1/2" x 5 1/2"
DECORATIVE HOLE PLUG**

PART NUMBER: HP1555 + W, T, A
STOCK COLORS: WHITE, TAN, ADOBE

DIMENSIONS: 3" x 7 3/8"

BOX QTY: 36
BOX WEIGHT: 4.5 LBS.

CAN COVER UP TO 2" W x 7" H
ROUTED HOLE.



**2 1/8" x 2 3/4"
GATE POCKET**

PART NUMBER: GP218X234 +
W, T, A
STOCK COLORS: WHITE, TAN, ADOBE

DIMENSIONS: 2 1/8" x 2 3/4" x 4"

BOX QTY: 42
BOX WEIGHT: 10 LBS.



**1 3/4" x 3 1/2"
GATE POCKET**

PART NUMBER: GP17535X4 +
W, T, A, MW, CG, GT
STOCK COLORS: WHITE, TAN, ADOBE,
MOCHA WALNUT, CHAI GRAY, GREEN TEAK

DIMENSIONS: 1 3/4" x 3 1/2" x 4"

BOX QTY: 48
BOX WEIGHT: 18 LBS.



**2" x 3 1/2"
GATE POCKET**

PART NUMBER: GP235X4 +
W, T, A, MW, AL, CG, GT, LG, DG
STOCK COLORS: WHITE, TAN, ADOBE, MOCHA
WALNUT, ASPEN LATTE, CHAI GRAY,
LIGHT GRAY, DARK GRAY

DIMENSIONS: 2" x 3 1/2" x 4"

BOX QTY: 48
BOX WEIGHT: 22 LBS.

Waymark is a registered trademark of Waymark Products, LLC.

GATE POCKETS

Gate Pockets



1 3/4" x 5 1/2" DECO GATE POCKET

PART NUMBER: GP17555X4 +
W, T, A, MW, LG, CG, GT, DG, AL
STOCK COLORS: WHITE, TAN, ADOBE,
MOCHA WALNUT, LIGHT GRAY, CHAI GRAY,
GREEN TEAK, DARK GRAY, ASPEN LATTE

DIMENSIONS: 1 3/4" x 5 1/2" x 4"

BOX QTY: 36
BOX WEIGHT: 17 LBS.



1 1/2" x 5 1/2" GATE POCKET

PART NUMBER: GP1555X4 +
W, T, A, MW
STOCK COLORS: WHITE, TAN, ADOBE,
MOCHA WALNUT

DIMENSIONS: 1 1/2" x 5 1/2" x 4"

BOX QTY: 40
BOX WEIGHT: 15 LBS.



2" x 6" GATE POCKET

PART NUMBER: GP26X4 +
W, T, A, MW,
STOCK COLORS: WHITE, TAN, ADOBE,
MOCHA WALNUT

DIMENSIONS: 2" x 6" x 4"

BOX QTY: 28
BOX WEIGHT: 18 LBS.



2" x 7" GATE POCKET

PART NUMBER: GP27X4 +
W, T, A, MW, LG, CG, GT, DG
STOCK COLORS: WHITE, TAN, ADOBE,
MOCHA WALNUT, LIGHT GRAY, CHAI GRAY,
GREEN TEAK, DARK GRAY


DIMENSIONS: 2" x 7" x 4"

BOX QTY: 24
BOX WEIGHT: 15 LBS.

Waymark is a registered trademark of Waymark Products, LLC.

END CAPS, HOLE PLUGS, GATE POCKETS

Rail Mounts




1-1/2" x 5-1/2" INTERNAL RAIL MOUNT

PART NUMBER: RM1555 + W, T, A
STOCK COLORS: WHITE, TAN, ADOBE

DIMENSIONS: 1-1/2" x 5-1/2"

BOX QTY: 64
BOX WEIGHT: 9 LBS.




1-3/4" x 5-1/2" INTERNAL RAIL MOUNT

PART NUMBER: RM17555 + W,T,A, MW
STOCK COLORS: WHITE, TAN, ADOBE, MOCHA WALNUT

DIMENSIONS: 1-3/4" x 5-1/2"

BOX QTY: 64
BOX WEIGHT: 10 LBS.




2" x 3-1/2" INTERNAL RAIL MOUNT

PART NUMBER: RM235 + W, T, A, MW
STOCK COLORS: WHITE, TAN, ADOBE, MOCHA WALNUT

DIMENSIONS: 2" x 3-1/2"

BOX QTY: 78
BOX WEIGHT: 9 LBS.




2" x 6" INTERNAL RAIL MOUNT

PART NUMBER: RM260 + W, T, A
STOCK COLORS: WHITE, TAN, ADOBE

DIMENSIONS: 2" x 6"

BOX QTY: 64
BOX WEIGHT: 11 LBS.




ADJUSTABLE EXTERNAL RAIL MOUNT WITH SCREWS

PART NUMBER: RMEADJ + W, T, A, MW, CG, GT, DG, LG
STOCK COLORS: WHITE, TAN, ADOBE, MOCHA WALNUT, CHAI GRAY, GREEN TEAK, DARK GRAY, LIGHT GRAY

DIMENSIONS: 1-1/2" TO 2" WIDE AND 5-1/2" TO 7" TALL

BOX QTY: 36 BOX WEIGHT: 12 LBS.

ADJUSTS TO 1-1/2" , 1-3/4" OR 2" WIDE. TRIM COVERS HIDE FASTENERS. SET INCLUDES 12 STAINLESS STEEL SCREWS.



REPLACEMENT PART

ADJUSTABLE EXTERNAL RAIL MOUNT COVERS

PART NUMBER: RMCEADJW + W,T,A
STOCK COLORS: WHITE, TAN, ADOBE

Box Qty 20
BOX WEIGHT: 2 LBS.

Waymark is a registered trademark of Waymark Products, LLC.

GORILLA™ RAILING - COMPONENTS

Trim Rings



4" NEW ENGLAND TRIM RING

PART NUMBER: TR44NE +
W, T, A, MW, CG, GT
STOCK COLORS: WHITE, TAN, ADOBE,
MOCHA WALNUT, CHAI GRAY, GREEN TEAK
BLACK AVAILABLE SOON!

DIMENSIONS: 4" x 4" x 1.30" H
INSIDE CORNER RADIUS: 0.125"
OUTSIDE DIMENSION: 5.49" SQ.

BOX QTY: 40
BOX WEIGHT: 9 LBS.

MATCHES POST CAP ITEM # C44NE



5" NEW ENGLAND TRIM RING

PART NUMBER: TR55NE +
W, T, A, MW, CG, GT, LG, DG
STOCK COLORS: WHITE, TAN, ADOBE,
MOCHA WALNUT, CHAI GRAY, GREEN TEAK,
LIGHT GRAY, DARK GRAY
BLACK AVAILABLE SOON!

DIMENSIONS: 5" x 5" x 1.62" H
INSIDE CORNER RADIUS: 0.125"
OUTSIDE DIMENSION: 6.77" SQ.

BOX QTY: 40
BOX WEIGHT: 15 LBS.

MATCHES POST CAP ITEM # C55NE



6" NEW ENGLAND TRIM RING

PART NUMBER: TR66NE + W, T, A
STOCK COLORS: WHITE, TAN, ADOBE
BLACK AVAILABLE SOON!

BOX QTY: 44
BOX WEIGHT: 9 LBS.



4" 2-PIECE NEW ENGLAND TRIM RING

PART NUMBER: TR442PCNE +
W, T, A
STOCK COLORS: WHITE, TAN, ADOBE

DIMENSIONS: 4" x 4" x 1.30" H
INSIDE CORNER RADIUS: 0.125"
OUTSIDE DIMENSION: 5.49" SQ.

BOX QTY: 50
BOX WEIGHT: 9 LBS.

MATCHES POST CAP ITEM # C44NE



4" CLASSIC TRIM RING

PART NUMBER: TR44CLS +
W, T, A, MW, CG, GT
STOCK COLORS: WHITE, TAN, ADOBE,
MOCHA WALNUT, CHAI GRAY, GREEN TEAK

DIMENSIONS: 4" x 4" x 1.40" H
INSIDE CORNER RADIUS: 0.125"
OUTSIDE DIMENSION: 5.75" SQ.

BOX QTY: 36
BOX WEIGHT: 9 LBS.

MATCHES POST CAP ITEM # C44CLS



5" CLASSIC TRIM RING

PART NUMBER: TR55CLS +
W, T, A, MW, CG, GT
STOCK COLORS: WHITE, TAN, ADOBE,
MOCHA WALNUT, CHAI GRAY, GREEN TEAK


DIMENSIONS: 5" x 5" x 1.48" H
INSIDE CORNER RADIUS: 0.125"
OUTSIDE DIMENSION: 6.78" SQ.

BOX QTY: 36
BOX WEIGHT: 13 LBS.

MATCHES POST CAP ITEM # C55CLS

GORILLA™ RAILING - COMPONENTS

Trim Rings & Foot Block




4" LOW TRIM RING

PART NUMBER: TR44LT +
W, T, A, MW, CG, GT
STOCK COLORS: WHITE, TAN, ADOBE,
MOCHA WALNUT, CHAI GRAY, GREEN TEAK

DIMENSIONS: 4" x 4" x 1.00" H
INSIDE CORNER RADIUS: 0.125"
OUTSIDE DIMENSION: 6.78" SQ.

BOX QTY: 40
BOX WEIGHT: 8 LBS.




4" MULTI-TRIM RING

PART NUMBER: TR45MT + W, T, A
STOCK COLORS: WHITE, TAN, ADOBE

DIMENSIONS: 4" x 4" x 1.48" H
INSIDE CORNER RADIUS: 0.125"
OUTSIDE DIMENSION: 6.78" SQ.

BOX QTY: 36
BOX WEIGHT: 10 LBS.

USES: TRIM RING, 4" TO 5" TRANSITION,
4" DECORATIVE KNUCKLE USING A 5" POST.




5" MULTI-TRIM RING

PART NUMBER: TR565MT + W, T, A
STOCK COLORS: WHITE, TAN, ADOBE

DIMENSIONS: 5" x 5" x 1.48" H
INSIDE CORNER RADIUS: 0.125"
OUTSIDE DIMENSION: 6.78" SQ.

BOX QTY: 40
BOX WEIGHT: 11 LBS.

USES: TRIM RING, 5" TO 6.5" TRANSITION,
5" DECORATIVE KNUCKLE USING A 6.5" POST.




4" TO 6" ADJUSTABLE TRIM RING (4-PIECE)

PART NUMBER: TR46ADJ + W, T, A
STOCK COLORS: WHITE, TAN, ADOBE

ADJUSTS TO FIT 4" TO 6" POST SIZES
HEIGHT: 1-3/32" (PORCH POST VERSION)
CORNER RADIUS: 7/16"

BOX QTY: 40 SETS
BOX WEIGHT: 12 LBS.

4 TRIM PIECES (1 SET) SLIDE TOGETHER
MAKING IT EASY TO INSTALL ONE TRIM RING




4" TO 6" ADJUSTABLE TRIM RING (4-PIECE) SMALL RADIUS

PART NUMBER: TR46WAD + W, T, A
STOCK COLORS: WHITE, TAN, ADOBE

ADJUSTS TO FIT 4" TO 6" POST SIZES
HEIGHT: 1-3/32" (POST WRAP VERSION)
CORNER RADIUS: 1/4"

BOX QTY: 40 SETS
BOX WEIGHT: 12 LBS.

USED FOR POST WRAPS
4 TRIM PIECES (1 SET) SLIDE TOGETHER
MAKING IT EASY TO INSTALL ONE TRIM RING



6 1/2" TO 12" ADJUSTABLE TRIM RING (4-PIECE)

PART NUMBER: TR6512ADJ + W, T, A
STOCK COLORS: WHITE, TAN, ADOBE

ADJUSTS TO FIT 6 1/2" TO 12" POSTS
HEIGHT: 2-3/32"
CORNER RADIUS: 1/4"


BOX QTY: 10 SETS
BOX WEIGHT: 15 LBS.

4 TRIM PIECES (1 SET) SLIDE TOGETHER
MAKING IT EASY TO INSTALL ONE TRIM RING

Gorilla™ is a trademark of Homeland Vinyl Products, Inc. Waymark is a registered trademark of Waymark Products, LLC.

GORILLA™ RAILING - COMPONENTS

Post Skirts, Column Base & Trim Rings



IMPROVED

ADJUSTABLE RAIL FOOT


PART NUMBER: RF138+
W, T, A, MW, CG, GT
STOCK COLORS: WHITE, TAN, ADOBE,
MOCHA WALNUT, CHAI GRAY, GREEN TEAK
BLACK AVAILABLE SOON!

ADJUSTS TO FIT 2" TO 4" HEIGHT

SCREW CAP ADDED FOR A MORE FINISHED
LOOK

BOX QTY: 50
BOX WEIGHT: 8 LBS.

CUT TO FIT, INSTALLS WITH ONE SCREW
BEFORE OR AFTER INSTALLATION



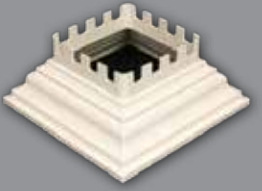
6" DENTAL POST SKIRT

PART NUMBER: TR66DENT + W, T, A
STOCK COLORS: WHITE, TAN, ADOBE

DIMENSIONS: 6" x 6"

BOX QTY: 36
BOX WEIGHT: 38 LBS.

MATCHES POST CAP ITEM # C66DENT



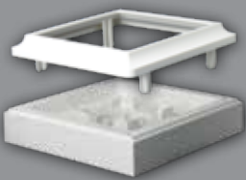
6 1/2" DENTAL POST SKIRT

PART NUMBER: TR6565DENT +
W, T, A
STOCK COLORS: WHITE, TAN, ADOBE

DIMENSIONS: 6 1/2" x 6 1/2"

BOX QTY: 25
BOX WEIGHT: 41 LBS.

MATCHES POST CAP ITEM # C6565DENT




**8" X 8" OR 6.5" X 6.5"
COLUMN BASE, TRIM & TRANSITION**

PART NUMBER: TR865CB + W, T, A
STOCK COLORS: WHITE, TAN, ADOBE

DIMENSIONS: 8" x 8" / 6 1/2" x
6 1/2"

BOX QTY: 16
BOX WEIGHT: 35 LBS.

MOUNTS AN 8" x 8" POST, 6.5" x 6.5" POST
OR TRANSITIONS FROM 8" TO 6.5" FOR A
DECORATIVE APPEARANCE



**8" X 8" COLUMN
BASE ONLY**

PART NUMBER: TR88CB + W, T, A
STOCK COLORS: WHITE, TAN, ADOBE

DIMENSIONS: 8" x 8"

BOX QTY: 24
BOX WEIGHT: 45 LBS.

MOUNTS AN 8" x 8" POST

Gorilla™ is a trademark of Homeland Vinyl Products, Inc. Waymark is a registered trademark of Waymark Products, LLC.

GORILLA™ GUARD RAIL SUMMIT® 2x3-1/2 & T-RAIL SYSTEM



**SUMMIT® 2" x 3-1/2"
RAIL BRACKET**

PART NUMBER: BL235S +
W, T, A, MW, CG, GT
STOCK COLORS: WHITE, TAN, ADOBE,
MOCHA WALNUT, CHAI GRAY, GREEN TEAK

INSIDE DIMENSIONS: 2" x 3 1/2"
INSIDE CORNER RADIUS: 0.125"
OVERALL DIMENSIONS: 3.745" x 5.20"

BOX QTY: 24 KITS (2 PER KIT)
BOX WEIGHT: 16 LBS.

BASE, TRIM COVERS AND SCREWS INCLUDED



**SUMMIT® 2" x 3-1/2"
STAIR BRACKET**

PART NUMBER: BS235S +
W, T, A, MW, CG, GT
STOCK COLORS: WHITE, TAN, ADOBE,
MOCHA WALNUT, CHAI GRAY, GREEN TEAK

INSIDE DIMENSIONS: 2" x 3 1/2"
INSIDE CORNER RADIUS: 0.125"
OVERALL DIMENSIONS: 3.745" x 5.20"

BOX QTY: 24 KITS (2 PER KIT)
BOX WEIGHT: 16 LBS.

BASE, TRIM COVERS AND SCREWS INCLUDED
DEGREE OF ANGLE: 31-38 DEGREES

REPLACEMENT
PART



**SUMMIT® 2" x 3-1/2"
BRACKET TRIM COVER**

PART NUMBER: BRC235S +
W, T, A, MW
STOCK COLORS: WHITE, TAN, ADOBE,
MOCHA WALNUT
CUSTOM COLORS AVAILABLE: YES

FOR BRACKET PART#:BL235S

BOX QTY: 20
BOX WEIGHT: 2 LBS.

COVERS ONLY FOR REPAIR/REPLACEMENT OF
LOST OR DAMAGED BRACKET COVERS

REPLACEMENT
PART



**SUMMIT® 2" x 3-1/2"
STAIR BRACKET TRIM COVER**

PART NUMBER: BSC235S +
W, T, A, MW
STOCK COLORS: WHITE, TAN, ADOBE,
MOCHA WALNUT
CUSTOM COLORS AVAILABLE: YES

FOR BRACKET PART#:BS235S

BOX QTY: 20
BOX WEIGHT: 2 LBS.

COVERS ONLY FOR REPAIR/REPLACEMENT OF
LOST OR DAMAGED BRACKET COVERS



SUMMIT® T-RAIL BRACKET

PART NUMBER: BLTRLS +
W, T, A, MW, CG, GT
STOCK COLORS: WHITE, TAN, ADOBE,
MOCHA WALNUT, CHAI GRAY, GREEN TEAK

INSIDE DIMENSIONS:
3 1/2" x 3 1/2"
OVERALL DIMENSIONS: 3.745" x 5.20"
BOX QTY: 24 KITS (2 PER KIT)
BOX WEIGHT: 16 LBS.

BASE, TRIM COVERS AND SCREWS INCLUDED



**SUMMIT® T-RAIL
STAIR BRACKET**

PART NUMBER: BSTRLS +
W, T, A, MW, CG, GT
STOCK COLORS: WHITE, TAN, ADOBE,
MOCHA WALNUT, CHAI GRAY, GREEN TEAK


INSIDE DIMENSIONS:
3 1/2" x 3 1/2"
OVERALL DIMENSIONS: 3.745" x 5.20"
BOX QTY: 24 KITS (2 PER KIT)
BOX WEIGHT: 18 LBS.

BASE, TRIM COVERS AND SCREWS INCLUDED
DEGREE OF ANGLE: 31-38 DEGREES

GORILLA™ GUARD RAIL

SUMMIT® T-RAIL & CONTOUR SYSTEM SUMMIT ADAPTERS

REPLACEMENT PART



SUMMIT® T-RAIL BRACKET TRIM COVER


PART NUMBER: BRCTRLS +
W, T, A, MW
STOCK COLORS: WHITE, TAN, ADOBE,
MOCHA WALNUT
CUSTOM COLORS AVAILABLE: YES

FOR BRACKET PART#:BLRRLS

BOX QTY: 20
BOX WEIGHT: 2 LBS.

COVERS ONLY FOR REPAIR/REPLACEMENT OF LOST OR DAMAGED BRACKET COVERS

REPLACEMENT PART




SUMMIT® T-RAIL STAIR BRACKET TRIM COVER

PART NUMBER: BSCTRLS +
W, T, A, MW
STOCK COLORS: WHITE, TAN, ADOBE,
MOCHA WALNUT
CUSTOM COLORS AVAILABLE: YES

FOR BRACKET PART#:BSTRLS

BOX QTY: 20
BOX WEIGHT: 2 LBS.

COVERS ONLY FOR REPAIR/REPLACEMENT OF LOST OR DAMAGED BRACKET COVERS




SUMMIT® CONTOUR BRACKET

PART NUMBER: BLCONS + W, T, A
STOCK COLORS: WHITE, TAN, ADOBE

INSIDE DIMENSIONS: 3 x 3 1/2"
OVERALL DIMENSIONS: 3.745" x 5.20"
FITS HOMELAND VINYL PRODUCTS CONTOUR RAIL

BOX QTY: 24 KITS (2 PER KIT)
BOX WEIGHT: 16 LBS.

BASE, TRIM COVERS AND SCREWS INCLUDED




SUMMIT® CONTOUR STAIR BRACKET

PART NUMBER: BSCONS + W, T, A
STOCK COLORS: WHITE, TAN, ADOBE

INSIDE DIMENSIONS: 3 x 3 1/2"
OVERALL DIMENSIONS: 3.745" x 5.20"
FITS HOMELAND VINYL PRODUCTS CONTOUR RAIL

BOX QTY: 24 KITS (2 PER KIT)
BOX WEIGHT: 18 LBS.

BASE, TRIM COVERS AND SCREWS INCLUDED
INCLUDED DEGREE OF ANGLE: 31-38 DEGREES




SUMMIT® 22 1/2 DEGREE ADAPTER

PART NUMBER: BA225S +
W, T, A, MW, CG, GT
STOCK COLORS: WHITE, TAN, ADOBE,
MOCHA WALNUT, CHAI GRAY, GREEN TEAK

DIMENSIONS: 3 15/16" x 5 3/8" H

BOX QTY: 10 KITS (2 PER KIT)
BOX WEIGHT: 5.5 LBS.

WORKS WITH BOTH STRAIGHT AND STAIR BRACKETS.



SUMMIT® 45 DEGREE ADAPTER

PART NUMBER: BA45S +
W, T, A, MW, CG, GT
STOCK COLORS: WHITE, TAN, ADOBE,
MOCHA WALNUT, CHAI GRAY, GREEN TEAK

DIMENSIONS: 3 15/16" x 5 3/8" H
Fits 6" to 10"

BOX QTY: 10 KITS (2 PER KIT)
BOX WEIGHT: 8.3 LBS.

WORKS WITH BOTH STRAIGHT AND STAIR BRACKETS.

Gorilla™ is a trademark of Homeland Vinyl Products, Inc. Waymark is a registered trademark of Waymark Products, LLC. Summit is an registered trademark of Waymark Products, LLC.

**GORILLA™ GUARD RAIL
ADAPTERS, SUMMIT® DECK-OVER SYSTEM**



**SUMMIT® 8" COLUMN
ADAPTER**

PART NUMBER: BA8CS + W, T, A
STOCK COLORS: WHITE, TAN, ADOBE

DIMENSIONS: 3 15/16" x 5 3/8" H

BOX QTY: 10 KITS (2 PER KIT)
BOX WEIGHT: 4 LBS.

WORKS WITH BOTH STRAIGHT AND STAIR
BRACKETS.



**SUMMIT® DECK-OVER
BRACKET**

PART NUMBER: BLDOVS +
W, T, A, MW, CG, GT
STOCK COLORS: WHITE, TAN, ADOBE,
MOCHA WALNUT, CHAI GRAY, GREEN TEAK

INSIDE DIMENSIONS: 2" x 3 1/2"
INSIDE CORNER RADIUS: 0.125"
OVERALL DIMENSIONS: 3.745" x 4.479"

BOX QTY: 24 KITS (2 PER KIT)
BOX WEIGHT: 16 LBS.

For use with top rail; use BL235S for bottom
rail

BASE, TRIM COVERS AND SCREWS
INCLUDED. DECK RAIL ATTACHMENT KIT
SOLD SEPARATELY



**SUMMIT® DECK-OVER
STAIR BRACKET**

PART NUMBER: BS235SDO +
W, T, A, MW, CG, GT
STOCK COLORS: WHITE, TAN, ADOBE,
MOCHA WALNUT, CHAI GRAY, GREEN TEAK

INSIDE DIMENSIONS: 2" x 3 1/2"
INSIDE CORNER RADIUS: 0.125"
OVERALL DIMENSIONS: 3.745" x 5.20"

BOX QTY: 24 KITS (2 PER KIT)
BOX WEIGHT: 16 LBS.

For use with top rail; use BS235S for bottom
rail

BASE, TRIM COVERS AND SCREWS INCLUDED
DEGREE OF ANGLE: 34 DEGREES



**SUMMIT® 22 1/2 DEGREE
DECK-OVER ADAPTER**

PART NUMBER: BA225DOV +
W, T, A, MW, CG, GT
STOCK COLORS: WHITE, TAN, ADOBE,
MOCHA WALNUT, CHAI GRAY, GREEN TEAK

DIMENSIONS:
4.5" x 3-23/32" x 1-1/2"

BOX QTY: 10 KITS (2 PER KIT)
BOX WEIGHT: 5.5 LBS.

WORKS WITH DECK-OVER AND FIELD CUT
BRACKETS.



**SUMMIT® 45 DEGREE
DECK-OVER ADAPTER**

PART NUMBER: BA45DOV +
W, T, A, MW, CG, GT
STOCK COLORS: WHITE, TAN, ADOBE,
MOCHA WALNUT, CHAI GRAY, GREEN TEAK

DIMENSIONS:
4.5" x 3-23/32" x 2-1/8"
Fits 6" to 10"

BOX QTY: 10 KITS (2 PER KIT)
BOX WEIGHT: 6 LBS.

WORKS WITH DECK-OVER AND FIELD CUT
BRACKETS.



**SUMMIT® 8" DECK-OVER
COLUMN ADAPTER**

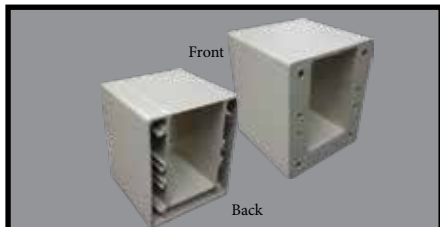
PART NUMBER: BA8CDOV + W, T, A
STOCK COLORS: WHITE, TAN, ADOBE

DIMENSIONS:
4.5" x 3-23/32" x 21/32"

BOX QTY: 10 KITS (2 PER KIT)
BOX WEIGHT: 4 LBS.

WORKS WITH DECK-OVER AND FIELD CUT
BRACKETS.

GORILLA™ GUARD RAIL ADAPTERS, SUMMIT® DECK-OVER SYSTEM



SUMMIT® DECK-OVER FIELD CUT ADAPTER

PART NUMBER: BAFCDOV + W, T, A
STOCK COLORS: WHITE, TAN, ADOBE

INSIDE DIMENSIONS: 2" x 3 1/2"
INSIDE CORNER RADIUS: 0.125"

OVERALL DIMENSIONS:
4.5" x 3-23/32" x 3-5/8"

BOX QTY: 10 KITS (2 PER KIT)

BOX WEIGHT: 21 LBS.

CUSTOM FIELD CUT FOR STAIR APPLICATIONS.
USE WITH SUMMIT DECK-OVER BRACKETS
NO SCREWS INCLUDED



SUMMIT® DECK BOARD RAILING ATTACHMENT KIT

PART NUMBER: B35DBRD

DIMENSIONS: 3.5" x 1 1/4" H
CONTAINS: 2 BRACKETS AND 8 SS SCREWS

BOX QTY: 50 KITS (2 PER KIT)

BOX WEIGHT: 7 LBS.

USE WITH SUMMIT DECK-OVER BRACKETS.

**GORILLA™ GUARD RAIL
SUMMIT® 2 SYSTEM**



SUMMIT® 2 • 2" X 3-1/2" BRACKET

PART NUMBER: BL235S2 + W, T, A,

STOCK COLORS: WHITE, TAN, ADOBE

INSIDE DIMENSIONS: 2" x 3 1/2"

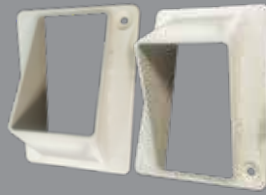
INSIDE CORNER RADIUS: 0.125"

OVERALL DIMENSIONS: 3.745" x 4.479"

BOX QTY: 24 KITS (2 PER KIT)

BOX WEIGHT: 16 LBS.

BRACKET, SCREW CAPS AND SCREWS INCLUDED.



SUMMIT® 2 • 2" X 3-1/2" STAIR BRACKET

PART NUMBER: BS235S2 + W, T, A,

STOCK COLORS: WHITE, TAN, ADOBE

INSIDE DIMENSIONS: 2" x 3 1/2"

INSIDE CORNER RADIUS: 0.125"

OVERALL DIMENSIONS: 3.745" x 5.20"

BOX QTY: 24 KITS (2 PER KIT)

BOX WEIGHT: 16 LBS.

BRACKET, SCREW CAPS AND SCREWS INCLUDED.



SUMMIT® 2 T-RAIL BRACKETS

PART NUMBER: BLTRLS2 + W, T, A,

STOCK COLORS: WHITE, TAN, ADOBE

INSIDE DIMENSIONS: 2" x 3 1/2"

INSIDE CORNER RADIUS: 0.125"

OVERALL DIMENSIONS: 3.745" x 5.20"

BOX QTY: 24 KITS (2 PER KIT)

BOX WEIGHT: 16 LBS.

BRACKET, SCREW CAPS AND SCREWS INCLUDED.



SUMMIT® 2 T-RAIL STAIR BRACKETS

PART NUMBER: BSTRLS2 + W, T, A,

STOCK COLORS: WHITE, TAN, ADOBE

INSIDE DIMENSIONS: 2" x 3 1/2"

INSIDE CORNER RADIUS: 0.125"

OVERALL DIMENSIONS: 3.745" x 5.20"

BOX QTY: 24 KITS (2 PER KIT)

BOX WEIGHT: 16 LBS.

BRACKET, SCREW CAPS AND SCREWS INCLUDED.



SUMMIT® 2 SCREW COVER CAPS

PART NUMBER: SCS2+

W, T, A, BK, CG, LG, DG, GT, MW
STOCK COLORS: WHITE, TAN, ADOBE, BLACK, CHAI GRAY, LIGHT GRAY, DARK GRAY, GREEN TEAK, MOCHA WALNUT

BOX QTY: 25 BAGS

(20 PCS PER BAG)

BOX WEIGHT: 2 LBS.

FOR USE WITH SUMMIT® 2 BRACKETS



SUMMIT® 2 BRACKET HOLE PLUGS

PART NUMBER: HPS2+ W, T, A,

STOCK COLORS: WHITE, TAN, ADOBE

BOX QTY: 25 BAGS


(20 PCS PER BAG)

BOX WEIGHT: 2 LBS.

FOR USE WITH SUMMIT® 2 BRACKETS

GORILLA™ GUARD RAIL

SUMMIT® CONVEX SYSTEM, NEXUS® BRACKETS




**SUMMIT® CONVEX
2" X 3-1/2" BRACKET**

PART NUMBER: BL235SX + W, T, A,
STOCK COLORS: WHITE, TAN, ADOBE

INSIDE DIMENSIONS: 2" x 3 1/2"
INSIDE CORNER RADIUS: 0.125"
OVERALL DIMENSIONS: 3.745" x 4.479"

BOX QTY: 24 KITS (2 PER KIT)
BOX WEIGHT: 16 LBS.

BASE, TRIM COVERS AND SCREWS INCLUDED.




**SUMMIT® CONVEX
2" X 3-1/2" STAIR BRACKET**

PART NUMBER: BS235SX + W, T, A,
STOCK COLORS: WHITE, TAN, ADOBE

INSIDE DIMENSIONS: 2" x 3 1/2"
INSIDE CORNER RADIUS: 0.125"
OVERALL DIMENSIONS: 3.745" x 5.20"

BOX QTY: 24 KITS (2 PER KIT)
BOX WEIGHT: 16 LBS.

BASE, TRIM COVERS AND SCREWS INCLUDED



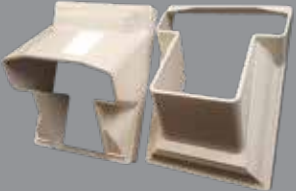
**SUMMIT® CONVEX T-RAIL
BRACKET**

PART NUMBER: BLTRLSX + W, T, A,
STOCK COLORS: WHITE, TAN, ADOBE

INSIDE DIMENSIONS: 2" x 3 1/2"
INSIDE CORNER RADIUS: 0.125"
OVERALL DIMENSIONS: 3.745" x 4.479"

BOX QTY: 24 KITS (2 PER KIT)
BOX WEIGHT: 16 LBS.

BASE, TRIM COVERS AND SCREWS INCLUDED.




**SUMMIT® CONVEX T-RAIL
STAIR BRACKET**

PART NUMBER: BSTRLSX + W, T, A,
STOCK COLORS: WHITE, TAN, ADOBE

INSIDE DIMENSIONS: 2" x 3 1/2"
INSIDE CORNER RADIUS: 0.125"
OVERALL DIMENSIONS: 3.745" x 5.20"

BOX QTY: 24 KITS (2 PER KIT)
BOX WEIGHT: 16 LBS.

BASE, TRIM COVERS AND SCREWS INCLUDED




**NEXUS® RAILING ALUMINUM
MOUNTING BRACKET KIT**

PART NUMBER: FC3408

OVERALL DIMENSIONS:
2-1/4" x 1-7/8" x 1-1/8"

BOX QTY: 48 KITS
BOX WEIGHT: 31 LBS.

Specifically for Homeland Nexus Railing System
4 BRACKETS PER KIT



**NEXUS® RAILING POLYMER
MOUNTING BRACKET KIT**

PART NUMBER: FC3416

OVERALL DIMENSIONS:
2-1/4" x 1-7/8" x 1-1/8"

BOX QTY: 48 KITS
BOX WEIGHT: 20 LBS.

Specifically for Homeland Nexus 2 Railing System
4 BRACKETS PER KIT

Availability and profile dimensions are subject to change without notice. Check with manufacturer before ordering.

All dimensions are subject to manufacturer's tolerances.

Gorilla™ is a trademark of Homeland Vinyl Products, Inc. Nexus® is a registered trademark of Homeland Vinyl Products, Inc.
Waymark is a registered trademark of Waymark Products, LLC.

GORILLA™ GUARD RAIL

NEXUS® 1 & NEXUS® 2 SYSTEM



NEXUS® 1-3/4" X 2-1/4" BOTTOM COVER CLIP

PART NUMBER: FC3410 + W, T, A
STOCK COLORS: WHITE, TAN, ADOBE
BLACK AVAILABLE SOON!

OVERALL DIMENSIONS:
2-11/16" x 2-5/8" x 1-1/4"

BOX QTY: 90
BOX WEIGHT: 8 LBS.

Specifically for Homeland Nexus Railing System



NEXUS® 1-3/4" X 2-1/4" BOTTOM BRACKETS & SCREWS

PART NUMBER: FC3414 + W, T, A
STOCK COLORS: WHITE, TAN, ADOBE
BLACK AVAILABLE SOON!

OVERALL DIMENSIONS:
3-1/2" x 5-1/2"

BOX QTY: 60
BOX WEIGHT: 28 LBS.

Specifically for Homeland Nexus Railing System



NEXUS® 1 1-3/4" T-RAIL BRACKET TOP COVER CLIP

PART NUMBER: FC3409 + W, T, A
STOCK COLORS: WHITE, TAN, ADOBE
BLACK AVAILABLE SOON!

OVERALL DIMENSIONS:
3-1/4" x 2-1/4" x 1-1/4"

BOX QTY: 90
BOX WEIGHT: 7 LBS.

Specifically for Homeland Nexus Railing System



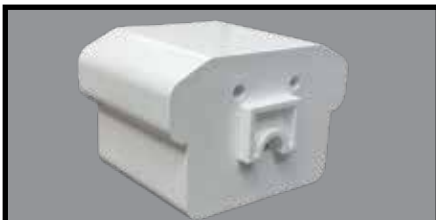
NEXUS® 1-3/4" T-RAIL STAIR BRACKETS & SCREWS

PART NUMBER: FC3413 + W,T,A
STOCK COLORS: WHITE, TAN, ADOBE
BLACK AVAILABLE SOON!

OVERALL DIMENSIONS:
3-1/2" x 5-1/2"

BOX QTY: 60
BOX WEIGHT: 25 LBS.

Specifically for Homeland Nexus Railing System



NEXUS® 1 1-3/4" T-RAIL TOP ADAPTER CUT BLOCK

PART NUMBER: FC3411 + W,T,A
STOCK COLORS: WHITE, TAN, ADOBE

OVERALL DIMENSIONS:
3-1/4" x 2-1/4" x 1-1/4"

BOX QTY: 60
BOX WEIGHT: 14 LBS.

Specifically for Homeland Nexus Railing System
CUSTOM FIELD CUT FOR STAIR APPLICATIONS.



NEXUS® 1 1-3/4" X 2-1/4" BOTTOM ADAPTER CUT BLOCK

PART NUMBER: FC3412 + W, T, A
STOCK COLORS: WHITE, TAN, ADOBE

OVERALL DIMENSIONS:
2-11/16" x 2-5/8" x 1-1/4"

BOX QTY: 60
BOX WEIGHT: 15 LBS.

Specifically for Homeland Nexus Railing System
CUSTOM FIELD CUT FOR STAIR APPLICATIONS.

Availability and profile dimensions are subject to change without notice. Check with manufacturer before ordering.

All dimensions are subject to manufacturer's tolerances.

Gorilla™ is a trademark of Homeland Vinyl Products, Inc. Nexus is a registered trademark of Homeland Vinyl Products, Inc.

Waymark is a registered trademark of Waymark Products, LLC.

GORILLA™ GUARD RAIL

NEXUS® 1 & NEXUS® 2 SYSTEM



NEXUS® 2 T-RAIL BRACKET TOP COVER CLIP

PART NUMBER: FC3417 + W, T, A
STOCK COLORS: WHITE, TAN, ADOBE

OVERALL DIMENSIONS:
3-1/4" x 2-1/4" x 1-1/4"

BOX QTY: 90
BOX WEIGHT: 7 LBS.

Specifically for Homeland Nexus Railing System



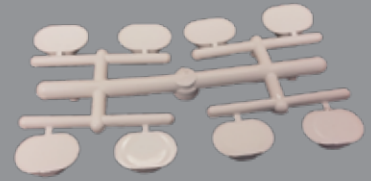
NEXUS® 2 T-RAIL STAIR BRACKETS & SCREWS

PART NUMBER: FC3418 + W,T,A
STOCK COLORS: WHITE, TAN, ADOBE

OVERALL DIMENSIONS:
3-1/2" x 5-1/2"

BOX QTY: 60
BOX WEIGHT: 25 LBS.

Specifically for Homeland Nexus Railing System



NEXUS® STAIR SCREW PLUGS

PART NUMBER: FC3415 + W,T,A
STOCK COLORS: WHITE, TAN, ADOBE
BLACK AVAILABLE SOON!

OVERALL DIMENSIONS:
4-1/2" x 2-1/2"

BOX QTY: 60
BOX WEIGHT: 3 LBS.

Specifically for Homeland Nexus Railing System



NEXUS® 22 1/2 DEGREE ADAPTER

PART NUMBER: FC3420 + W, T, A
STOCK COLORS: WHITE, TAN, ADOBE
BLACK AVAILABLE SOON!

DIMENSIONS:
3-3/8" x 2-3/4" x 1-3/8"

BOX QTY: 10 sets of 4 with screws
BOX WEIGHT: 6 LBS.

WORKS WITH BOTH STRAIGHT AND STAIR BRACKETS.



NEXUS® 45 DEGREE ADAPTER

PART NUMBER: FC3421 + W, T, A
STOCK COLORS: WHITE, TAN, ADOBE
BLACK AVAILABLE SOON!

DIMENSIONS:
3-3/8" x 2-3/4" x 1-15/16"

BOX QTY: 10 sets of 4 with screws
BOX WEIGHT: 7 LBS.

WORKS WITH BOTH STRAIGHT AND STAIR BRACKETS.



NEXUS® 8" COLUMN ADAPTER

PART NUMBER: FC3422 + W, T, A
STOCK COLORS: WHITE, TAN, ADOBE
BLACK AVAILABLE SOON!

DIMENSIONS:
3-3/8" x 2-3/4" x 1/2"

BOX QTY: 10 sets of 4 with screws
BOX WEIGHT: 4 LBS.

WORKS WITH BOTH STRAIGHT AND STAIR BRACKETS.

GORILLA™ GUARD RAIL

NEXUS® 2" x 3-1/2" SYSTEM



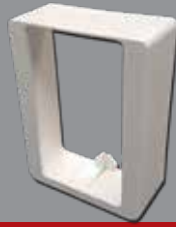
NEXUS® 2" x 3-1/2" BRACKETS & SCREWS

PART NUMBER: FC3423 + W,T,A
STOCK COLORS: WHITE, TAN, ADOBE

OVERALL DIMENSIONS:
2-3/4" x 3-3/4" x 1-1/8"

Box Qty 48
BOX WEIGHT: 26 LBS.

Specifically for Homeland Nexus Railing System



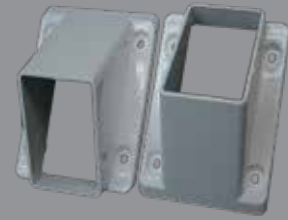
NEXUS® 2" x 3-1/2" BRACKET COVER CLIP

PART NUMBER: FC3424 + W, T, A
STOCK COLORS: WHITE, TAN, ADOBE

OVERALL DIMENSIONS:
2-1/2" x 3-13/16" x 1-1/4"

BOX QTY: 72
BOX WEIGHT: 7 LBS.

Specifically for Homeland Nexus Railing System



NEXUS® 2" x 3-1/2" STAIR BRACKETS & SCREWS

PART NUMBER: FC3425 + W,T,A
STOCK COLORS: WHITE, TAN, ADOBE

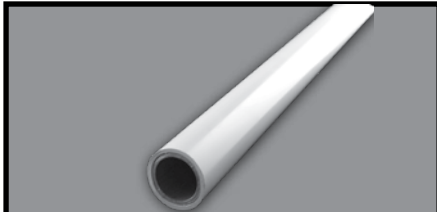
OVERALL DIMENSIONS:
3-3/4" x 5-3/8" x 3"

Box Qty 48
BOX WEIGHT: 26 LBS.

Specifically for Homeland Nexus Railing System

GORILLA™ GRAB RAIL - SUMMIT® SECONDARY HANDRAIL

8'8" Handrail, Mounting Brackets, End Caps, Post Returns and Wall Mounts



8'8" HANDRAIL WITH ALUMINUM INSERT

PART NUMBER: HR88RAIL +
W, T, A, BK
STOCK COLORS: WHITE, TAN, ADOBE, BLACK

DIMENSIONS: 8'8" L x 1.5" OUTSIDE DIAMETER

BOX QTY: 8
BOX WEIGHT: 49 LBS.



3" OFFSET ALUMINUM MOUNTING BRACKET

PART NUMBER: HRC3BRAKA +
W, T, A, BK
STOCK COLORS: WHITE, TAN, ADOBE, BLACK

BASE DIAMETER: 2-7/8"

BOX QTY: 24
BOX WEIGHT: 27 LBS.

Includes hardware to install part.
Now with Screw caps, No more painted screws!



1" HANDRAIL END CAP

PART NUMBER: HR1ECAP +
W, T, A, BK
STOCK COLORS: WHITE, TAN, ADOBE, BLACK

OUTSIDE DIAMETER: 1.5"
INSIDE DIAMETER: 1"

BOX QTY: 96
BOX WEIGHT: 3 LBS.



90 DEGREE ALUMINUM POST RETURN

PART NUMBER: HRC90RETBR +
W, T, A, BK
STOCK COLORS: WHITE, TAN, ADOBE, BLACK

BASE DIAMETER: 3"
CENTER LINE TO PIPE FITTING: 3"

BOX QTY: 24
BOX WEIGHT: 31 LBS.

Includes hardware to install part.
Beauty rings are included. Now with Screw caps, No more painted screws!



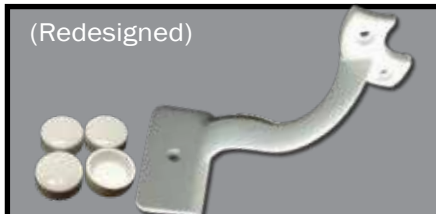
STRAIGHT ALUMINUM WALL MOUNT

PART NUMBER: HRC134SWA +
W, T, A, BK
STOCK COLORS: WHITE, TAN, ADOBE, BLACK

BASE DIAMETER: 3"
FACE MOUNTED TO PIPE FITTING:
1 3/4"

BOX QTY: 12
BOX WEIGHT: 10 LBS.

Includes hardware to install part.
Now with Screw caps, No more painted screws!



6" INSIDE CORNER MOUNTING BRACKET

PART NUMBER: HRC6INBKA +
W, T, A, BK
STOCK COLORS: WHITE, TAN, ADOBE, BLACK

CENTER LINE TO CORNER FACE:
4-3/4"

BOX QTY: 6
BOX WEIGHT: 2 LBS.

Includes hardware to install part.
Now with Screw caps, No more painted screws!

GORILLA™ GRAB RAIL - SUMMIT® SECONDARY HANDRAIL
 Corner, Stair Elbows and Returns

(Redesigned)



90 DEGREE INSIDE & OUTSIDE CORNER

PART NUMBER: HRX90INOUTCR +
 W, T, A, BK
 STOCK COLORS: WHITE, TAN, ADOBE, BLACK

OUTSIDE DIAMETER: 1.5"
 CENTER LINE TO PIPE FITTING:
 2 3/4"

BOX QTY: 6
 BOX WEIGHT: 5.25 LBS.

USE OUR JOINER KIT TO ATTACH TO HANDRAIL



32 DEGREE STAIR ELBOW

PART NUMBER: HR32ELBW +
 W, T, A, BK
 STOCK COLORS: WHITE, TAN, ADOBE, BLACK

OVERALL LENGTH: 12 3/4"
 OUTSIDE DIAMETER: 1.5"

BOX QTY: 12
 BOX WEIGHT: 8 LBS.

ALUMINUM REINFORCED
 USE OUR JOINER KIT TO ATTACH TO
 HANDRAIL
 INCLUDES (2) BEAUTY RINGS



34 DEGREE STAIR ELBOW

PART NUMBER: HR34ELBW +
 W, T, A, BK
 STOCK COLORS: WHITE, TAN, ADOBE, BLACK

OVERALL LENGTH: 12 3/4"
 OUTSIDE DIAMETER: 1.5"

BOX QTY: 12
 BOX WEIGHT: 8 LBS.

ALUMINUM REINFORCED
 USE OUR JOINER KIT TO ATTACH TO
 HANDRAIL
 INCLUDES (2) BEAUTY RINGS



36 DEGREE STAIR ELBOW

PART NUMBER: HR36ELBW +
 W, T, A, BK
 STOCK COLORS: WHITE, TAN, ADOBE, BLACK

OVERALL LENGTH: 12 3/4"
 OUTSIDE DIAMETER: 1.5"

BOX QTY: 12
 BOX WEIGHT: 8 LBS.

ALUMINUM REINFORCED
 USE OUR JOINER KIT TO ATTACH TO
 HANDRAIL
 INCLUDES (2) BEAUTY RINGS



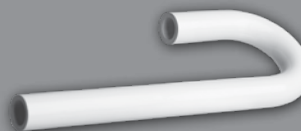
5 DEGREE HANDICAP ELBOW

PART NUMBER: HR5ELBOW +
 W, T, A, BK
 STOCK COLORS: WHITE, TAN, ADOBE, BLACK

OVERALL LENGTH: 12"
 OUTSIDE DIAMETER: 1.5"

BOX QTY: 12
 BOX WEIGHT: 7 LBS.

ALUMINUM REINFORCED
 USE OUR JOINER KIT TO ATTACH TO
 HANDRAIL
 INCLUDES (2) BEAUTY RINGS



180 DEGREE POST RETURN

PART NUMBER: HR180PR + W, T, A
 STOCK COLORS: WHITE, TAN, ADOBE

OVERALL LENGTH: 27"
 OUTSIDE DIAMETER: 1.5"
 1 BEAUTY RING INCLUDED

BOX QTY: 12
 BOX WEIGHT: 15 LBS.

HEAVY WALL PVC PIPE
 USE OUR JOINER KIT TO ATTACH TO
 HANDRAIL
 INCLUDES (1) BEAUTY RING AND (1) END CAP

Gorilla™ is a trademark of Homeland Vinyl Products, Inc. Waymark is a registered trademark of Waymark Products, LLC.
 Summit is an registered trademark of Waymark Products, LLC.

GORILLA™ GRAB RAIL - SUMMIT® SECONDARY HANDRAIL

Beauty Ring, Handicap Loop, and Joiners



1 1/2" ALUMINUM BEAUTY RING

PART NUMBER: HRX15BRA+
W + T, A, BK
STOCK COLORS: WHITE, TAN, ADOBE, BLACK

INSIDE DIAMETER: 1.5"
INSERTION DEPTH: 1/8"

BOX QTY: 24
BOX WEIGHT: 1 LB.

COVERS THE SEAM BETWEEN TWO SECTIONS OF PIPE.



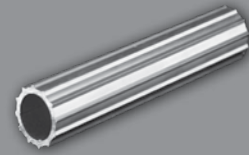
HANDICAP LOOP

PART NUMBER: HR12LOOP +
W, T, A, BK
STOCK COLORS: WHITE, TAN, ADOBE, BLACK

DIMENSIONS: 12" x 18" x 12"
1 BEAUTY RING INCLUDED

BOX QTY: 12
BOX WEIGHT: 28 LBS.

ALUMINUM REINFORCED
USE OUR JOINER KIT TO ATTACH TO HANDRAIL
INCLUDES (1) BEAUTY RING AND (1) END CAP



6" ALUMINUM JOINER KIT WITH SCREWS

PART NUMBER: HR6JOINA
STOCK COLORS: N/A

OUTSIDE DIAMETER: 1"

BOX QTY: 48
BOX WEIGHT: 8 LBS.



EXTERNAL ADJUSTABLE JOINER

PART NUMBER: HRXESJOIN +
W, T, A, BK
STOCK COLORS: WHITE, TAN, ADOBE, BLACK

OUTSIDE DIAMETER: 1.5"

BOX QTY: 6
BOX WEIGHT: 7LBS.

Includes hardware to install part.

Gorilla™ is a trademark of Homeland Vinyl Products, Inc. Waymark is a registered trademark of Waymark Products, LLC. Summit is an registered trademark of Waymark Products, LLC.



SOLAR POST CAP LIGHTING

SMART CIRCUIT TECHNOLOGY
THE LATEST IN CIRCUIT TECHNOLOGY



REAL GLASS
WITH BEVELED LENS

REFLECTOR PLATE
EFFECTIVELY DISPERSES MORE LIGHT
THAN TRADITIONAL SOLAR LIGHTING

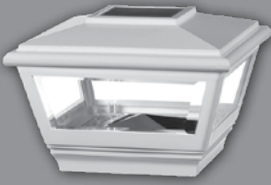
HAND MADE STAINED GLASS OPTIONS
MADE IN USA QUALITY PVC AND ASA MATERIAL
AESTHETICALLY PLEASING TAPERED FRAME
MATCH WITH WAYPOINT® STYLE TOPS

*BATTERY ACCESS TO STAINED GLASS TOPS IS EVEN EASIER! SIMPLY LIFT UP ON SOLAR COLLECTOR.

Waymark is a registered trademark of Waymark Products, LLC. Waypoint is an registered trademark of Waymark Products, LLC.

GORILLA™ LIGHTING, SOLAR-TOPS

WAYPOINT® Solar Post Cap Lighting - White, Black, Black, Forest



4" WAYPOINT® SOLAR LIGHT

Stock Colors & Part Numbers:

WhiteSLWHWH4W - (Shown)
 BlackSLBKBK4BK
 Tan.....SLTT4T
 Adobe.....SLAA4A

DIMENSIONS: 4" x 4" x 4 3/4" H
 AVAILABLE 3.5" ADAPTER WILL ATTACH TO
 PVC, WOOD, METAL

BOX QTY: 12
 BOX WEIGHT: 21 LBS.



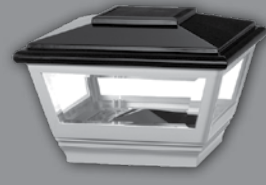
5" WAYPOINT® SOLAR LIGHT

Stock Colors & Part Numbers:

WhiteSLWHWH5W
 BlackSLBKBK5BK - (Shown)
 Tan.....SLTT5T
 Adobe.....SLAA5A

DIMENSIONS: 5" x 5" x 5 1/4" H

BOX QTY: 12
 BOX WEIGHT: 22 LBS.



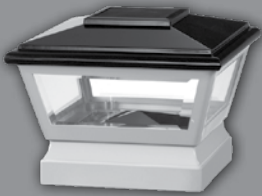
4" BLACK TOP WAYPOINT® SOLAR LIGHT WITH WHITE BASE

Stock Colors & Part Numbers:

WhiteSLBKWH4W - (Shown)
 Tan.....SLBKT4T
 Adobe.....SLBKA4A

DIMENSIONS: 4" x 4" x 4 3/4" H
 AVAILABLE 3.5" ADAPTER WILL ATTACH TO
 PVC, WOOD, METAL

BOX QTY: 12
 BOX WEIGHT: 21 LBS.



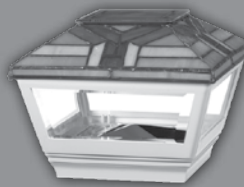
5" BLACK TOP WAYPOINT® SOLAR LIGHT WITH WHITE BASE

Stock Colors & Part Numbers:

WhiteSLBKWH5W - (Shown)
 Tan.....SLBKT5T
 Adobe.....SLBKA5A

DIMENSIONS: 5" x 5" x 5 1/4" H

BOX QTY: 12
 BOX WEIGHT: 22 LBS.



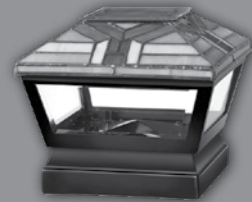
4" FOREST TOP WAYPOINT® SOLAR LIGHT W/ WHITE BASE

Stock Colors & Part Numbers:

WhiteSLFORWH4W - (Shown)
 BlackSLFORBK4BK
 Tan.....SLFORT4T
 Adobe.....SLFORA4A

DIMENSIONS: 4" x 4" x 5" H
 AVAILABLE 3.5" ADAPTER WILL ATTACH TO
 PVC, WOOD, METAL

BOX QTY: 12
 BOX WEIGHT: 25 LBS.



5" FOREST TOP WAYPOINT® SOLAR LIGHT W/ BLACK BASE

Stock Colors & Part Numbers:

WhiteSLFORWH5W
 BlackSLFORBK5BK - (Shown)
 Tan.....SLFORT5T
 Adobe.....SLFORA5A

DIMENSIONS: 5" x 5" x 5 1/4" H

BOX QTY: 12
 BOX WEIGHT: 26 LBS.

Gorilla™ is a trademark of Homeland Vinyl Products, Inc. Waymark is a registered trademark of Waymark Products, LLC.
 Waypoint is an registered trademark of Waymark Products, LLC.

GORILLA™ LIGHTING, SOLAR-LOW VOLTAGE-TOPS

WAYPOINT® Solar Post Cap Lighting - Sunflower & Grape Top



**4" SUNFLOWER TOP
WAYPOINT® SOLAR LIGHT
W/ WHITE BASE**

Stock Colors & Part Numbers:

WhiteSLSNFWH4W - (Shown)
 BlackSLSNFBK4BK
 Tan.....SLSNFT4T
 Adobe.....SLSNFA4A

DIMENSIONS: 4" x 4" x 5" H

AVAILABLE 3.5" ADAPTER WILL ATTACH TO
 PVC, WOOD, METAL

BOX QTY: 12

BOX WEIGHT: 25 LBS.



**5" SUNFLOWER TOP
WAYPOINT® SOLAR LIGHT
W/ BLACK BASE**

Stock Colors & Part Numbers:

WhiteSLSNFWH5W
 BlackSLSNFBK5BK - (Shown)
 Tan.....SLSNFT5T
 Adobe.....SLSNFA5A

DIMENSIONS: 5" x 5" x 5 1/4" H

BOX QTY: 12

BOX WEIGHT: 26 LBS.



**4" GRAPE TOP WAYPOINT®
SOLAR LIGHT W/ WHITE BASE**

Stock Colors & Part Numbers:

WhiteSLGRPWH4W - (Shown)
 BlackSLGRPBK4BK
 Tan.....SLGRPT4T
 Adobe.....SLGRPA4A

DIMENSIONS: 4" x 4" x 5" H

AVAILABLE 3.5" ADAPTER WILL ATTACH TO
 PVC, WOOD, METAL

BOX QTY: 12

BOX WEIGHT: 25 LBS.



**5" GRAPE TOP WAYPOINT®
SOLAR LIGHT W/ BLACK BASE**

Stock Colors & Part Numbers:

WhiteSLGRPWH5W
 BlackSLGRPBK5BK - (Shown)
 Tan.....SLGRPT5T
 Adobe.....SLGRPA5A

DIMENSIONS: 5" x 5" x 5 1/4" H

BOX QTY: 12


BOX WEIGHT: 26 LBS.

Gorilla™ is a trademark of Homeland Vinyl Products, Inc. Waymark is a registered trademark of Waymark Products, LLC.
 Waypoint is an registered trademark of Waymark Products, LLC.

GORILLA™ LIGHTING, SOLAR-LOW VOLTAGE-TOPS

WAYPOINT® Solar Post Cap Lighting - Circuits, Adapter

REPLACEMENT PART



CIRCUIT FOR SOLID COLOR TOPS (NOT METAL)


PART NUMBER: C-0113225

FITS 4" AND 5" TOP

BOX QTY: 1

FITS 4" AND 5" SOLAR LIGHTS.
CIRCUIT IS REPLACED FROM UNDERSIDE OF COLOR TOPS

REPLACEMENT PART



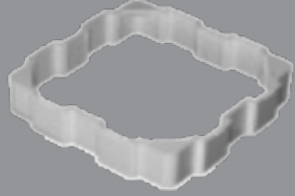
CIRCUIT FOR STAINED GLASS TOPS

PART NUMBER: C-134077

FITS 4" AND 5" TOP

BOX QTY: 1

FITS 4" AND 5" SOLAR LIGHTS.
CIRCUIT IS REPLACED FROM TOP OF STAINED GLASS TOPS



3-1/2" SOLAR LIGHT ADAPTER

PART NUMBER: SL35ADPTW
STOCK COLORS: WHITE
CUSTOM COLORS AVAILABLE: YES

DIMENSIONS: 3 1/2" x 3 1/2"

BOX QTY: 1

FITS 4" TAPERED STYLE LIGHT

Gorilla™ is a trademark of Homeland Vinyl Products, Inc. Waymark is a registered trademark of Waymark Products, LLC.
Waypoint is an registered trademark of Waymark Products, LLC.

GORILLA® MATRIX PLATE & TRIM
GORILLA® MATRIX PLATE AND TRIM



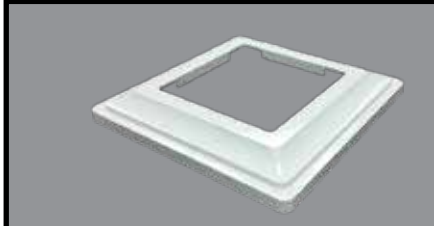
GORILLA® MATRIX MOUNTING PLATE W/ BUSHING & TRIM

PART NUMBER: BR88UCM + W, T, A
 STOCK COLORS: WHITE, TAN, ADOBE

DIMENSIONS: 8" X 8"

BOX QTY: 1 (2 KITS PER BOX)
 WEIGHT: 6 LBS.

KIT INCLUDES, GORILLA MATRIX MOUNTING PLATE, BUSHING & UNIVERSAL TRIM



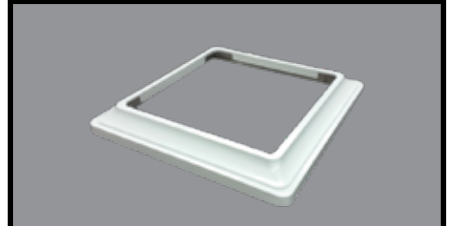
5" X 5" SQUARE COLUMN TRIM

PART NUMBER: TR55CT + W, T, A
 STOCK COLORS: WHITE, TAN, ADOBE

DIMENSIONS: 5" x 5"

BOX QTY: 19 BAGS
 (2 EACH PER BAG - LABELED)
 WEIGHT: 16 LBS.

THIS TRIM ATTACHES TO THE UNIVERSAL TRIM OR TRANSITION FROM 8" X 8" TO 5" X 5"



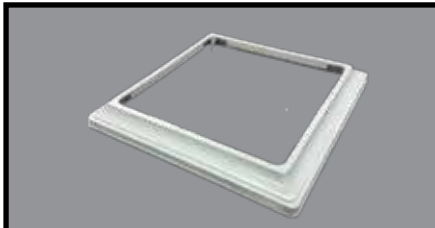
6-1/2" X 6-1/2" SQUARE COLUMN TRIM

PART NUMBER: TR6565CT + W, T, A
 STOCK COLORS: WHITE, TAN, ADOBE

DIMENSIONS: 6-1/2" X 6-1/2"

BOX QTY: 17 BAGS
 (2 EACH PER BAG - LABELED)
 WEIGHT: 11 LBS.

THIS TRIM ATTACHES TO THE UNIVERSAL TRIM OR TRANSITION FROM 8" X 8" TO 6-1/2" X 6-1/2"



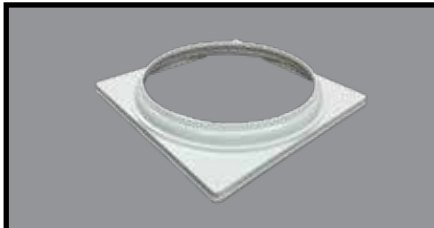
8" X 8" SQUARE COLUMN TRIM

PART NUMBER: TR88CT + W, T, A
 STOCK COLORS: WHITE, TAN, ADOBE

DIMENSIONS: 8" X 8"

BOX QTY: 11 BAGS
 (2 EACH PER BAG - LABELED)
 WEIGHT: 10 LBS.

THIS TRIM ATTACHES TO THE UNIVERSAL TRIM



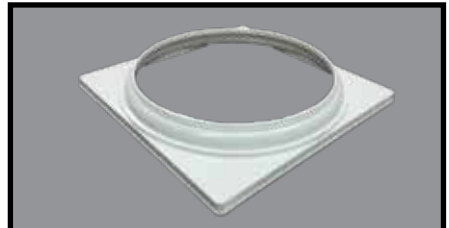
6-5/8" ROUND COLUMN TRIM

PART NUMBER: TR658RCT + W, T, A
 STOCK COLORS: WHITE, TAN, ADOBE

DIMENSIONS: 6.625" X 6.625"

BOX QTY: 17 BAGS
 (2 EACH PER BAG - LABELED)
 WEIGHT: 15 LBS.

THIS TRIM ATTACHES TO THE UNIVERSAL TRIM OR TRANSITION FROM 8" X 8" TO 6-5/8" ROUND



8.4" ROUND COLUMN TRIM

PART NUMBER: TR84RCT + W, T, A
 STOCK COLORS: WHITE, TAN, ADOBE

DIMENSIONS: 8.4" X 8.4"

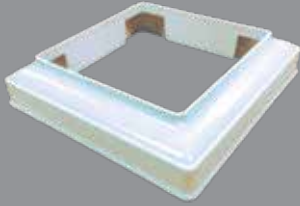
BOX QTY: 20 BAGS
 (2 EACH PER BAG - LABELED)
 WEIGHT: 19 LBS.

THIS TRIM ATTACHES TO THE UNIVERSAL TRIM

Gorilla® is a registered trademark of Homeland Vinyl Products, Inc. Waymark is a registered trademark of Waymark Products, LLC.

GORILLA® MATRIX PLATE & TRIM

GORILLA® MATRIX & CLIPS



5" TO 6-1/2" TRANSITION COLUMN TRIM

PART NUMBER: TR565TCT + W, T, A
STOCK COLORS: WHITE, TAN, ADOBE

DIMENSIONS: 6-1/2" x 6-1/2"

BOX QTY: 8 BAGS
(2 EACH PER BAG - LABELED)
WEIGHT: 7 LBS.

TRANSITION FROM 6-1/2" TO 5"



ADJUSTABLE PERGOLA CLIPS

PART NUMBER: PCADJ
Colors: White, Tan, Adobe and Mocha Walnut

DIMENSIONS: Adjusts to accommodate profiles
1-1/2" W, 1-3/4" W & 2" W

BOX QTY: 50

2 PER BAG WITH 8 SCREWS

Gorilla® is a registered trademark of Homeland Vinyl Products, Inc. Waymark is a registered trademark of Waymark Products, LLC.

GORILLA™ MOUNTS -POST MOUNTS
 Summit® Post Mount, Post Mount Components, Universal Hardware Kit



SUMMIT® POST MOUNT SYSTEM
COMPONENT ATTRIBUTES:

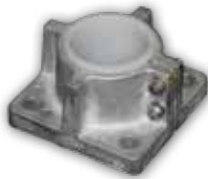

ADJUSTABLE SOCKET:

- Plumb at the top of the post mount
- Attach socket to pipe
- Slide post sleeve over socket



DIE CAST BASE:

- Mounts to any surface
- No Shims
- Die Cast Zinc
- Solid connection to any decking or concrete surface


**SUMMIT® POST MOUNT
 BASE COMPONENT**

PART NUMBER: PM178ZBASE
 STOCK COLORS: N/A

DIMENSIONS: 4" x 4"
 FOR USE WITH 1 7/8" PIPE
 USE 3/8" FASTENERS - NOT INCLUDED

BOX QTY: 18
 BOX WEIGHT: 32 LBS.

MOUNTS TO DECK OR CONCRETE SURFACE
 EASILY AND ACCEPTS 1-7/8" OD PIPE OF
 VARIOUS LENGTHS TO INSTALL FENCE,
 RAILING OR OTHER OUTDOOR STRUCTURES.



**5" ADJUSTABLE 1-PIECE
 POST SOCKET - 1 7/8 PIPE**

PART NUMBER: PS5DIAM
 STOCK COLORS: N/A

DIAMETER: 5"
 SLEEVE USING 5" x 5" POST .150 WALL OR
 LESS

BOX QTY: 100
 BOX WEIGHT: 36 LBS.

FOR USE WITH 1 7/8" OD STEEL PIPE.

GORILLA™ MOUNTS -POST MOUNTS

Post Sockets , Gorilla® Post Mounts



4" POST MOUNT WITH WINGS

PART NUMBER: PM44WING
STOCK COLORS: N/A

DIMENSIONS: 4" x 4"

BOX QTY: 34
BOX WEIGHT: 23 LBS.

ACCEPTS MOST WALL THICKNESSES



5" POST MOUNT WITH WINGS

PART NUMBER: PM55WING
STOCK COLORS: N/A

DIMENSIONS: 5" x 5"

BOX QTY: 26
BOX WEIGHT: 24 LBS.

ACCEPTS MOST WALL THICKNESSES



4" GORILLA® POST MOUNT WITH HARDWARE

PART NUMBER: PM44GORW
STOCK COLORS: N/A

DIMENSIONS: 4" x 4"

BOX QTY: 1
BOX WEIGHT: 4 LBS.

INCLUDES HARDWARE AND TRIM RING

ACCEPTS MOST WALL THICKNESSES



4" GORILLA® POST MOUNT WITHOUT HARDWARE

PART NUMBER: PM44GORWO
STOCK COLORS: N/A

DIMENSIONS: 4" x 4"

BOX QTY: 9
BOX WEIGHT: 18 LBS.

ACCEPTS MOST WALL THICKNESSES



5" GORILLA® POST MOUNT WITH HARDWARE

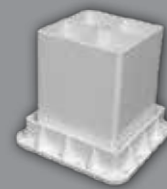
PART NUMBER: PM55GORW
STOCK COLORS: N/A

DIMENSIONS: 5" x 5"

BOX QTY: 1
BOX WEIGHT: 5 LBS.

INCLUDES HARDWARE AND TRIM RING

ACCEPTS MOST WALL THICKNESSES



5" GORILLA® POST MOUNT WITHOUT HARDWARE

PART NUMBER: PM55GORWO
STOCK COLORS: N/A

DIMENSIONS: 5" x 5"

BOX QTY: 6
BOX WEIGHT: 18 LBS.

ACCEPTS MOST WALL THICKNESSES

Gorilla™ is a trademark of Homeland Vinyl Products, Inc. Waymark is a registered trademark of Waymark Products, LLC.
Summit is an registered trademark of Waymark Products, LLC.

GORILLA™ MOUNTS -POST MOUNTS

Gorilla® Post Mount Trim, Hardware Kit & Rivets

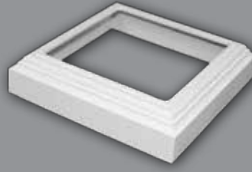


VINYL WEDGE COMPONENT FOR GORILLA® MOUNT

PART NUMBER: WEDGE
STOCK COLORS: N/A

DIMENSIONS: 3" L x 1/4" H
1/4" IS AT HIGHEST POINT

BOX QTY: 1500
BOX WEIGHT: 3.5 LBS.

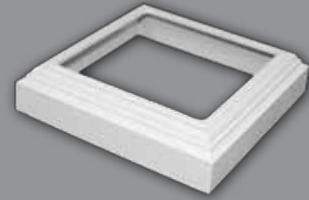


4" POST TRIM COMPONENT FOR GORILLA® MOUNT

PART NUMBER: TR44GOR + W, T, A
STOCK COLORS: WHITE, TAN, ADOBE

DIMENSIONS: 4" x 4"

BOX QTY: 39
BOX WEIGHT: 11 LBS.



5" POST TRIM COMPONENT FOR GORILLA® MOUNT

PART NUMBER: TR55GOR + W, T, A
STOCK COLORS: WHITE, TAN, ADOBE

DIMENSIONS: 5" x 5"

BOX QTY: 29
BOX WEIGHT: 10 LBS.



HARDWARE KIT FOR GORILLA® MOUNT

PART NUMBER: PMGORHARDK
STOCK COLORS: N/A

DIMENSIONS: 4" x 4" PLATE


BOX QTY: 1
BOX WEIGHT: 5.6 LBS.

INCLUDES 2 SHIMS, 2 MOUNTING PLATES,
SCREWS, BOLTS AND ALL-THREAD ROD

Gorilla™ is a trademark of Homeland Vinyl Products, Inc. Gorilla® is a registered trademark of Homeland Vinyl Products, Inc. Waymark is a registered trademark of Waymark Products, LLC. Summit is an registered trademark of Waymark Products, LLC.

MISCELLANEOUS - FASTENERS AND ADHESIVES

Router Bits, Rail Lock, & Glue




8 OZ. PVC GLUE

PART NUMBER: G8OZTUBE + W, C
STOCK COLORS: WHITE, CLEAR

DIMENSIONS: N/A

BOX QTY: 8
BOX WEIGHT: 13 LBS.

SPECIFICALLY FORMULATED FOR PVC APPLICATIONS, UV PROTECTED, SETS UP QUICKLY, LONG SHELF LIFE.



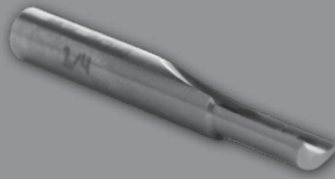
1.5 OZ. PVC GLUE

PART NUMBER: G15OZTUBE + W, C
STOCK COLORS: WHITE, CLEAR

DIMENSIONS: N/A

BOX QTY: 24
BOX WEIGHT: 3 LBS.

SPECIFICALLY FORMULATED FOR PVC APPLICATIONS, UV PROTECTED, SETS UP QUICKLY, LONG SHELF LIFE.



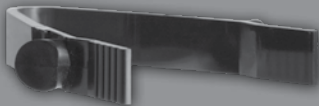
1/4" SINGLE FLUTE CARBIDE ROUTER BIT

PART NUMBER: T1/4ROUT
STOCK COLORS: N/A

DIAMETER: 1/4"
LENGTH: 2 1/2"

BOX QTY: 1
BOX WEIGHT: .03 LBS.

HIGH QUALITY




RAIL LOCK

PART NUMBER: RL15LOCK
STOCK COLORS: N/A

FOR USE ON 1 1/2", 1 3/4" OR 2" RAIL WIDTH

BOX QTY: 500
BOX WEIGHT: 15 LBS.

USED IN PLACE OF NOTCHING. DRILL 1/2" HOLE IN RAIL, INSTALL LOCK AND SLIDE RAIL INTO POST.




7/8" DOME HEAD STYLE RIVET

PART NUMBER: F875RIVET + P, W, T
STOCK COLORS: STANDARD, WHITE, TAN

DIMENSIONS: 3/16" x 7/8"

BOX QTY: 500
BOX WEIGHT: 2 LBS.

GRIP RANGE APPROXIMATELY .040-.350



1" DOME HEAD STYLE RIVET

PART NUMBER: F1RIVET + P, W, T
STOCK COLORS: STANDARD, WHITE, TAN

DIMENSIONS: 3/16" x 1"

BOX QTY: 500
BOX WEIGHT: 2 LBS.

GRIP RANGE APPROXIMATELY .150-.460

Gorilla is a registered trademark of Homeland Vinyl Products, Inc.

MISCELLANEOUS - FASTENERS AND ADHESIVES

Glue, Notching Tool & Replacement Jaws



**3/4" NOTCHING TOOL W/
REPLACEABLE JAWS**

PART NUMBER: T3/4NOTCH
STOCK COLORS: N/A

DIMENSIONS: N/A

BOX QTY: 1
BOX WEIGHT:



**REPLACEABLE JAWS KIT
FOR 3/4" NOTCHING TOOL**

PART NUMBER: T3/4NOTCHJAWS
STOCK COLORS: N/A

DIMENSIONS: N/A

BOX QTY: 1
BOX WEIGHT:



**STARBORN® PRO PLUG®
SYSTEM**

PART NUMBER:
Adobe - Stainless - GWPLGKA100-SS
Adobe - Epoxy - GWPLGKA100-EP
Light Gray - Stainless - GWPLGKL100-SS
Light Gray - Epoxy - GWPLGKL100-EP
Dark Gray - Stainless - GWPLGKF100-SS
Dark Gray - Epoxy - GWPLGKF100-EP
Chestnut - Stainless - GWPLGKC100-SS
Chestnut - Epoxy - GWPLGKC100-EP

BOX INCLUDES:
1 Tool, Screws, Color Plugs for
100 LN FT



**DECK TRIM CHANNEL
PUSH PINS**

PART NUMBER: F1PUSH
STOCK COLORS: White, Tan, Adobe, Mocha
Walnut,
Light Gray, Dark Gray & Chestnut

DIMENSIONS: 1" Length

BOX QTY: 480
Total Box WEIGHT: 1 LB.

Drill 1/4" Hole

INDEX

Product and Descriptions	Part #	Page #	Product and Descriptions	Part #	Page #
ADHESIVES			DECK-OVER, SUMMIT® HANDRAIL BRACKETS		
8 OZ. PVC Glue.....	G8OZTUBE.....	41	Deck-Over Summit® Bracket.....	BLDOVS.....	22
1.5 OZ. PVC Glue.....	G15OZTUBE.....	41	Deck-Over Summit® Stair Bracket.....	BS235SDO.....	22
DECK ACCESSORY			22-1/2 Degree Deck-Over		
Deck Trim Channel Push Pin.....	F1PUSH.....	42	Summit® Adapter.....	BA225DOV.....	22
Starborn Pro Plug System.....		42	45 Degree Deck-Over		
FASTENERS & RIVETS			Summit® Adapter.....	BA45DOV.....	22
7/8" Dome Head Style Rivet.....	F875RIVET.....	41	8" Summit® Deck-Over		
1" Dome Head Style Rivet.....	F1RIVET.....	41	Column Adapter.....	BA8CDOV.....	22
Rail Lock.....	RL15LOCK.....	41	Deck-Over Summit® Field		
END CAPS			Cut Adapter.....	BAFCDOV.....	23
2" x 3-1/2" Internal End Cap.....	EC235.....	13	Summit® Deck Board		
2" x 3-1/2" External End Cap.....	EEC235.....	13	Attachment Kit.....	B35DBRD.....	23
1-1/2" x 5-1/2" Internal End Cap.....	EC1555.....	13	CONTOUR, SUMMIT® HANDRAIL BRACKETS		
2" x 6" Internal End Cap.....	EC260.....	13	Contour Summit® Bracket.....	BLCONS.....	21
2" x 6" External End Cap.....	EEC260.....	13	Contour Summit®		
GATE POCKETS			Stair Bracket.....	BSCONS.....	21
2-1/8" x 2-3/4" x 4" Gate Pocket.....	GP218X234.....	14	22 1/2 Degree Summit® Adapter.....	BA225S.....	21
1-3/4" x 3-1/2" x 4" Gate Pocket.....	GP17535X4.....	14	45 Degree Summit® Adapter.....	BA45S.....	21
2" x 3-1/2" x 4" Gate Pocket.....	GP235X4.....	14	8" Summit® Column Adapter.....	BA8CS.....	22
1-3/4" x 5-1/2" x 4" Deco Gate Pocket.....	GP17555X4.....	15	SUMMIT® 2 SYSTEM, 2" X 3-1/2" HANDRAIL BRACKETS		
1-1/2" x 5-1/2" x 4" Gate Pocket.....	GP1555X4.....	15	Summit® 2, 2" x 3-1/2" Bracket.....	BL235S2.....	24
2" x 6" x 4" Gate Pocket.....	GP26X4.....	15	Summit® 2, 2" x 3-1/2" Stair Bracket.....	BS235S2.....	24
2" x 7" x 4" Gate Pocket.....	GP27X4.....	15	Summit® 2, T-Rail Bracket.....	BLTRLS2.....	24
GRAB RAIL, GORILLA®, SUMMIT® SECONDARY HANDRAIL			Summit® 2, T-Rail Stair Bracket.....	BSTRLS2.....	24
8'8" Handrail with Aluminum Insert.....	HR88RAIL.....	29	Summit® 2, Screw Caps.....	SCS2.....	24
3" Offset Aluminum Mounting Bracket.....	HRC3BRAKA.....	29	Summit® 2, Bracket Hole Plugs.....	HPS2.....	24
1" Handrail End Cap.....	HR1ECAP.....	29	SUMMIT® CONVEX, HANDRAIL BRACKETS		
90 Degree Aluminum Post Return.....	HRC90RETA.....	29	Summit® Convex, 2" x 3-1/2" Bracket		
Straight Aluminum Wall Mount.....	HRC134SWMA.....	29	Summit® Convex, 2" x 3-1/2" Stair Bracket		
6" Inside Corner Mounting Bracket.....	HRC6INBKA.....	29	Summit® Convex, 2" x 3-1/2" Stair Bracket	BS235SX.....	25
90 Degree Inside & Outside Corner.....	HRX90INOUTC.....	30	Summit® Convex, T-Rail Bracket.....	BLTRLSX.....	25
32 Degree Stair Elbow.....	HR32ELBW.....	30	Summit® Convex, T-Rail Stair		
34 Degree Stair Elbow.....	HR34ELBW.....	30	Bracket.....	BSTRLSX.....	25
36 Degree Stair Elbow.....	HR36ELBW.....	30	NEXUS® SYSTEM, HANDRAIL BRACKETS		
5 Degree Handicap Elbow.....	HR5ELBOW.....	30	Nexus® Railing Aluminum		
180 Degree Post Return.....	HR180PR.....	30	Mounting Bracket Kit.....	FC3408.....	25
1-1/2" Metal Beauty Ring.....	HRX15BRA.....	31	Nexus® Railing Polymer		
Handicap Loop.....	HR12LOOP.....	31	Mounting Bracket Kit.....	FC3416.....	25
6" Aluminum Joiner Kit with Screws.....	HR6JOINA.....	31	Nexus® 1-3/4" X 2-1/4"		
External Adjustable Joiner.....	HRXESJOIN.....	31	Bottom Cover Clip.....	FC3410.....	26
GORILLA® GUARD			Nexus® 1-3/4" X 2-1/4"		
RAIL BY SYSTEMS & STYLES			Bottom Brackets & Screws.....	FC3414.....	26
2" X 3-1/2" SUMMIT® HANDRAIL BRACKETS			Nexus® 1-3/4" T-Rail		
2" x 3-1/2" Summit® Rail Bracket.....	BL235S.....	20	Top Brackets & Screws.....	FC3413.....	26
2" x 3-1/2" Summit® Stair Bracket.....	BS235S.....	20	NEXUS® 1 SYSTEM, HANDRAIL BRACKETS		
Replacement Summit®			Nexus® 1, 1-3/4" T-Rail Bracket		
2" x 3-1/2" Bracket Trim Cover.....	BRC235S.....	20	Top Cover Clip.....	FC3409.....	26
Replacement Summit® 2" x 3-1/2"			Nexus® 1, 1-3/4" T-Rail		
Stair Bracket Trim Cover.....	BSC235S.....	20	Top Adapter Cut Block.....	FC3411.....	26
22 1/2 Degree Summit® Adapter.....	BA225S.....	21	Nexus® 1, 1-3/4" x 2-1/4"		
45 Degree Summit® Adapter.....	BA45S.....	21	Bottom Adapter Cut Block.....	FC3412.....	26
8" Summit® Column Adapter.....	BA8CS.....	22	NEXUS® 2 SYSTEM, HANDRAIL BRACKETS		
T-RAIL SUMMIT® HANDRAIL BRACKETS			Nexus® 2, T-Rail Bracket		
T-Rail Summit® Bracket.....	BLTRLS.....	20	Top Cover Clip.....	FC3417.....	27
T-Rail Summit® Stair Bracket.....	BSTRLS.....	20	Nexus® 2, T-Rail Stair Brackets		
Replacement Summit®			& Screws.....	FC3418.....	27
T-Rail Bracket Trim Cover.....	BRCTRLS.....	21	22 1/2 Degree Nexus® Adapter.....	FC3420.....	27
Replacement Summit®			45 Degree Nexus® Adapter.....	FC3421.....	27
T-Rail Stair Bracket Trim Cover.....	BRSTRLS.....	21	8" Nexus® Column Adapter.....	FC3422.....	27
22 1/2 Degree Summit® Adapter.....	BA225S.....	21	Nexus® Stair Screw Plugs.....	FC3415.....	27
45 Degree Summit® Adapter.....	BA45S.....	21			
8" Summit® Column Adapter.....	BA8CS.....	22			

INDEX

Product and Descriptions	Part #	Page #	Product and Descriptions	Part #	Page #
NEXUS® 2" X 3-1/2" SYSTEM			4" Gorilla® Post Mount with Hardware..... PM44GORW39		
Nexus® 2" x 3-1/2" Brackets & Screws	FC3423	28	4" Gorilla® Post Mount without Hardware.....	PM44GORWO	39
Nexus® 2" x 3-1/2" Bracket Cover Clip.....	FC3424	28	5" Gorilla® Post Mount with Hardware.....	PM55GORW	39
Nexus® 2" x 3-1/2" Stair Brackets & Screws	FC3425	28	5" Gorilla® Post Mount without Hardware.....	PM55GORW0	39
HOLE PLUGS			Vinyl Wedge Component for Gorilla® Mount	Wedge.....	40
5/8" Hole Plug.....	HP5/8	14	4" Post Trim Component for Gorilla® Mount	TR44GOR	40
1-1/4" Hole Plug.....	HP125	14	5" Post Trim Component for Gorilla® Mount	TR55GOR	40
1-1/2" x 5-1/2" Decorative Hole Plug.....	HP1555	14	Hardware Kit for Gorilla® Mount	PMGORHARDK	40
LATTICE			POST SOCKET		
4' x 8' Classic Lattice	L4X8CLS	12	5" Adjustable 1-Piece Post Socket - 1-7/8" Pipe.....	PS5DIAM	38
4' x 8' Privacy Lattice.....	L4X8PRV	12	RAIL FOOT		
1' x 8' Pre-Cut Classic Lattice - Pallet.....	LPRECUT	12	Adjustable Rail Foot	RF138	18
1' x 8' Pre-Cut Classic Lattice - Boxed	LCUTBOX	12	RAIL LOCK		
MATRIX, GORILLA® MATRIX ACCESSORIES			Rail Lock.....	RL15LOCK	41
Gorilla® Matrix Mounting Plate w/Bushing & Trim.....	BR88UCM	36	RAIL MOUNTS		
5" x 5" Square Column Trim	TR55CT	36	1-1/2" x 5-1/2" Internal Rail Mount.....	RM1555	16
6-1/2" x 6-1/2" Square Column Trim	TR6565CT	36	1-3/4" x 5-1/2" Internal Rail Mount.....	RM17555	16
8" x 8" Square Column Trim	TR88CT	36	2" x 3-1/2" Internal Rail Mount.....	RM235	16
6-5/8" Round Column Trim	TR658RCT	36	2" x 6" Internal Rail Mount.....	RM260	16
8.4" Round Column Trim	TR84RCT	36	Adjustable External Rail Mount, w/screws 1-1/2" TO 2" W and 5-1/2" TO 7" H.....	RMEADJ	16
5" to 6-1/2" Transition Column Trim	TR565TCT	37	Adjustable External Rail Mount, Replacement Covers.....	RMCEADJW	16
Adjustable Pergola Clips	PCADJ	37	RIVETS		
PERGOLA ACCESSORY			7/8" Dome Head Style Rivet.....	F875RIVET	41
Adjustable Pergola Clips	PCADJ	37	1" Dome Head Style Rivet.....	F1RIVET	41
PICKET CAPS			ROUTER BIT		
7/8" x 1-1/2" PVC Spade Picket Cap.....	P7815S	10	1/4" Single Flute Carbide Router Bit.....	T1/4ROUT	41
1-3/8" PVC Sharp Picket Cap.....	P138SH	10	SOLAR LIGHTING, GORILLA® LIGHTING & ACCESSORIES		
1-1/2" PVC Sharp Picket Cap.....	P1515SH	10	4" Waypoint® Solar Light.....	reference page.....	33
7/8" x 3" PVC Dog Ear Picket Cap	P783DE	10	5" Waypoint® Solar Light.....	reference page.....	33
7/8" x 3" PVC Spade Picket Cap	P783S	10	4" Black Top Waypoint® Solar Light with White Base.....	reference page.....	33
1" x 1" Arrowhead Picket Cap.....	P11A	10	5" Black Top Waypoint® Solar Light with White Base.....	reference page.....	33
1" x 1" Boyscout Picket Cap.....	P11B	11	4" Forest Top Waypoint® Solar Light with White Base.....	reference page.....	33
1-3/8" PVC Gothic Cap Square External.....	P138GOTH	11	5" Forest Top Waypoint® Solar Light with White Base.....	reference page.....	33
POST CAPS			4" Sunflower Top Waypoint® Solar Light with White Base.....	reference page.....	34
4" External PVC Pyramid Cap.....	C44PYRA	6	5" Sunflower Top Waypoint® Solar Light with Black Base.....	reference page.....	34
4" External Short Lip PVC Pyramid Cap.....	C44SHRT	6	4" Grape Top Waypoint® Solar Light with White Base.....	reference page.....	34
5" External PVC Pyramid Cap.....	C55PYRA	6	5" Grape Top Waypoint® Solar Light with White Base.....	reference page.....	34
6-1/2" External PVC Pyramid Cap.....	C65PYRA	6	Replacement Circuit for Solid Color Tops (Not Metal).....	C-0113225	35
8" External PVC Pyramid Cap.....	C88HORSE	6	Replacement Circuit for Stained Glass Tops.....	C-134077	35
4" Internal PVC Pyramid Cap	C44IPYRA	6	3-1/2" Solar Light Adaptor.....	SL35ADPTW	35
5" Internal PVC Pyramid Cap	C55IPYRA	7	POST MOUNTS, GORILLA® MOUNTS & ACCESSORIES		
4" PVC New England Cap.....	C44NE	7	Summit® Post Mount Base Component.....	PM178ZBASE	38
5" PVC New England Cap.....	C55NE	7	5" Adjustable 1-Piece Post Socket - 1-7/8" Pipe.....	PS5DIAM	38
4" PVC Classic Cap.....	C44CLS	7	4" Post Mount with Wings.....	PM44WING	39
5" PVC Classic Cap.....	C55CLS	7	5" Post Mount with Wings.....	PM55WING	39
4" PVC Gothic Cap.....	C44GOTH	7			
5" PVC Gothic Cap.....	C55GOTH	8			
6" PVC Dental Cap.....	C66DENT	8			
6-1/2" PVC Dental Cap.....	C65DENT	8			

TERMS AND CONDITIONS

TERMS OF PAYMENT – Terms of payment are set forth on the invoice. If no payment terms are listed on the invoice, then the default terms of payment are payment in full at time of shipment. Payment may be made by check (subject to check clearing), ACH electronic fund transfer, or wire transfer. Payment may be made by credit card only with prior written approval by an authorized Waymark Products, LLC (“Waymark”) representative – additional fees may apply. At Waymark’s request, Customer shall complete or update an Application for Trade Account signed by a corporate officer, managing member, partner, or owner. Customer agrees that prior to Waymark providing or extending credit terms, Waymark shall have the right to demand financial information, including financial data, credit checks, and payment history. Credit terms are subject to change at Waymark’s sole discretion. Waymark reserves the right to withhold shipment on any order for customer accounts that are in arrears until the accounts are paid in full. Customer agrees that accounts not paid within terms will be charged interest at the rate of 1.5% per month, and Customer agrees to pay all amounts due, including interest, fees, and costs of collection upon demand by Waymark. Prices are subject to change without notice.

PLACING ORDERS – All orders must be submitted in writing to Waymark, and must describe with specificity part numbers, color, detailed descriptions, and quantities. Illegible orders will not be accepted. All orders are subject to Waymark’s acceptance, approval, and these Terms and Conditions, whether or not these Terms and Conditions are included in Waymark’s written confirmation to Customer.

CANCELLATION – Following Waymark’s written confirmation of Customer’s order, Customer shall not be permitted to cancel, whether in whole or part, any order and shall be obligated to pay the entire invoice.

SHIPMENT – All prices are F.O.B. Waymark Products, LLC Origin Freight Collect, unless otherwise set forth on the invoice or otherwise agreed upon in writing signed by an authorized Waymark representative. Products listed on the invoice (the “Products”) are invoiced at Waymark’s prices prevailing at time of shipment. Method, origin, and route of shipment are subject to Waymark’s sole discretion unless Customer and an authorized Waymark representative agree in writing to other explicit shipping instructions. Customer bears any and all shipping expenses and costs in excess of those charges explicitly acknowledged in writing by an authorized Waymark representative. Customer is exclusively responsible for providing Waymark a correct shipping address.

FORCE MAJEURE & DELAYS – Waymark is not and shall not be liable for any obligations, delays, or damages incurred by Customer under any purchase order, invoice, or other agreement between the parties if Waymark’s non-performance is or was due to a Force Majeure Event, as described here: any act of God; war; riot; civil strife; act of terrorism, domestic or foreign; embargo; government rule, regulation, or decree; flood, fire, hurricane, tornado, or other casualty; epidemic, pandemic, outbreak of communicable disease, viral outbreak, or quarantine; national or regional emergency; action of any governmental authority; earthquake; strike; lockout, or other labor disturbance; the unavailability of labor or materials to the extent beyond the control of Waymark; any delay in the performance of orders or in the delivery of shipments of products; or any other events or circumstances not within the reasonable control of Waymark, whether similar or dissimilar to any of the foregoing. Upon occurrence of a Force Majeure Event, Waymark shall promptly notify the Customer that such an event has occurred and its anticipated effect on performance, including its expected duration if known. Notwithstanding the foregoing, no Force Majeure Event experienced by Waymark shall excuse Customer’s obligation to make payments due and owing prior to such event.

TAXES – Any and all sales taxes, manufacturer taxes, excise taxes or other charges levied or imposed by any governmental authority, agency or entity, foreign or domestic, upon any Products sold or contracted to be sold shall be paid by Customer and appropriate tax exemption certificates must be delivered in such form to Waymark and with such content as are satisfactory to Waymark.

INSPECTION AND ACCEPTANCE – CUSTOMER SHALL CAREFULLY EXAMINE ALL PRODUCTS DESCRIBED IN THE INVOICE IMMEDIATELY UPON DELIVERY. CUSTOMER MUST PROVIDE WAYMARK WITH WRITTEN NOTICE OF ANY ALLEGED DEFECTIVE PRODUCT WITHIN SIXTY (60) DAYS AFTER DELIVERY. CUSTOMER’S FAILURE TO NOTIFY WAYMARK IN WRITING OF ANY DEFECTS IN THE PRODUCTS WITHIN SIXTY (60) DAYS AFTER DELIVERY CONSTITUTES THE UNQUALIFIED ACCEPTANCE OF SUCH PRODUCTS AND THE WAIVER BY CUSTOMER OF ANY AND ALL CLAIMS OR DEFENSES WITH RESPECT THERETO. Customer is exclusively responsible to unload all Products. Within forty-eight (48) hours of Customer’s receipt of each shipment, Customer shall inspect the shipment and compare all containers and Products to the packing list for the shipment. If the quantities received and the quantities on the packing list are not the same, Customer shall notify Waymark immediately. Within forty-eight (48) hours of Customer’s receipt of each shipment, Customer is responsible to inspect packaging materials and products for dents, tears, breakages, or other visible damage to packaging or products, and to note such matters on shipping documents provided to the freight carrier and Waymark. If Customer fails to notify Waymark within 48 hours after receipt of any such matters, Waymark shall no longer be responsible or liable for damaged items or items missing from the shipment.

CUSTOMER’S EXCLUSIVE REMEDY – The exclusive remedy of Customer shall be limited to any of the following: (1) the replacement of any defective Product by Waymark, (2) the return of any defective Product and refund of the purchase price by Waymark, or (3) the issuance of a credit by Waymark in an amount equal to the purchase price paid by Customer for any defective Product. The selection of any of the aforesaid exclusive remedies shall be at Waymark’s sole discretion. In the event Customer requests a credit for any defective Product, Customer agrees (1) such product shall no longer be covered by Waymark’s warranty, (2) Waymark expressly disclaims any warranty, written or implied, associated with such product, and (3) Customer shall defend and indemnify Waymark against any and all claims associated with such product that Customer thereafter delivers, distributes or sells to third parties.

LIMITED WARRANTY – Waymark warrants that the Products are free of defects in materials and workmanship as set forth in Waymark’s warranty located at www.waymarkproducts.com.

WARRANTY DISCLAIMERS – THE LIMITED WARRANTY AND EXCLUSIVE REMEDY DESCRIBED ABOVE ARE EXPRESSLY IN LIEU OF ANY OTHER REMEDIES AND WARRANTIES, EXPRESSED OR IMPLIED, ON THE PART OF WAYMARK CONCERNING THE PRODUCTS. WAYMARK DISCLAIMS, WITHOUT LIMITATION, ANY IMPLIED WARRANTIES OF MERCHANTABILITY AND FITNESS FOR A PARTICULAR PURPOSE. WAYMARK DISCLAIMS ANY WARRANTIES NOT EXPRESSLY SET FORTH IN WAYMARK’S WRITTEN WARRANTY SET FORTH AT www.waymarkproducts.com. WAYMARK NEITHER ASSUMES NOR AUTHORIZES ANY OTHER PERSON, FIRM OR CORPORATION TO OBLIGATE WAYMARK WITH RESPECT TO ANY LIABILITY OR OBLIGATIONS IN CONNECTION WITH THE SALE OF WAYMARK PRODUCTS. CUSTOMER ACKNOWLEDGES THAT NO REPRESENTATION EXCEPT THOSE MADE HEREIN HAVE BEEN MADE TO CUSTOMER BY OR ON BEHALF OF WAYMARK CONCERNING THE PRODUCTS AND THAT CUSTOMER HAS NOT AND WILL NOT RELY ON ANY OTHER REPRESENTATIONS REGARDING WARRANTIES OR QUALITY OF WAYMARK PRODUCTS EXCEPT AS SET FORTH IN WAYMARK’S WARRANTY SET FORTH AT www.waymarkproducts.com. CUSTOMER AND ANY THIRD PARTIES TO WHOM IT SELLS THE PRODUCTS ARE EXCLUSIVELY RESPONSIBLE FOR DETERMINING WHETHER THE PRODUCTS MEET APPLICABLE LAWS OR LOCAL BUILDING CODES AND WHETHER PRODUCTS ARE SUITABLE FOR THE INTENDED USES OF END-USERS, AND CUSTOMER AGREES WAYMARK IS NOT RESPONSIBLE FOR DETERMINING SUITABILITY FOR INTENDED USES OR SATISFACTION OF APPLICABLE LAWS OR BUILDING CODES.

RISK OF LOSS – Unless otherwise specified herein, all prepaid expenses (e.g., freight, special handling charges such as after-hours loading, etc.) will be added to the order at time of invoicing and described on the invoice. RISK OF LOSS SHALL PASS TO CUSTOMER UPON DELIVERY OF THE PRODUCTS BY WAYMARK TO THE CARRIER, AND CUSTOMER’S SOLE RECOURSE FOR DAMAGE TO OR LOSS OF GOODS IN TRANSIT SHALL BE AGAINST THE CARRIER. WAYMARK WILL PROVIDE NO INSURANCE UNLESS CUSTOMER HAS MADE SPECIFIC ARRANGEMENTS PRIOR TO SHIPMENT AND WAYMARK HAS CONFIRMED SUCH ARRANGEMENTS IN WRITING.

RETURNED MERCHANDISE – All returns of Products for credit must have the prior written approval of an authorized Waymark representative and must be for justifiable reasons. Any credit extended for such approved returns will be based on the invoice price of the returned Products at time of purchase by Customer less a restocking charge of 20%. No Products shall be returned for credit which have been damaged or otherwise rendered unusable, unless otherwise approved in writing by an authorized Waymark representative. Custom and special order items will not be accepted for return. All returned Products shall be returned freight prepaid by Customer with Customer assuming the risk of loss until Waymark receives the Products.

ADDITIONAL LIMITATIONS ON LIABILITY – The invoice, including these Terms and Conditions, sets forth the sole and exclusive remedies available to the Customer and that Waymark’s liabilities to Customer are limited as set forth herein. Waymark has not granted or assumed any other warranties, guarantees, duties, liabilities, or obligations, expressed, implied, statutory, at law or in equity. No breach of warranty or breach of contract or other failure by Waymark to fulfill any other duties or conditions shall constitute a failure of the essential purpose of the exclusive limited remedies set forth herein. WAYMARK SHALL UNDER NO CIRCUMSTANCES BE LIABLE FOR SPECIAL, INCIDENTAL, EXEMPLARY, PUNITIVE, INDIRECT, OR CONSEQUENTIAL DAMAGES, including, but not limited to, any damages related or attributable to loss of profits, anticipated revenue, interest, loss of use, loss by reason of plant or facility shutdown, nonoperation, cost of substitute products, equipment, facilities or services, additional usage of utilities, cost incurred in removing defective or nonconforming Products or equipment, delays in installation of the work or the completion of any projects in which equipment is being installed, or other claims arising from any cause whatsoever, whether or not such loss or damage is based in contract, warranty, tort (including negligence), strict liability, indemnity, contribution or otherwise. Customer agrees Waymark shall have no liability whatsoever unless Customer makes payment in full to Waymark for the Products.

DISPUTES – In the event of Customer’s failure to pay amounts due under any invoice, and if Customer has failed to notify Waymark of defective product claims pursuant to the procedures set forth in these Terms and Conditions, Customer agrees to waive any defenses to Waymark’s demands and claims for payment. These Terms and Conditions shall be governed by the laws of the State of Utah (without regard to the conflicts of law provisions thereof). Customer hereto consents to the jurisdiction of the state and federal courts located in Salt Lake County, Utah as the exclusive jurisdiction of the resolution of any claims or disputes related hereto. CUSTOMER WAIVES ANY RIGHT TO A TRIAL BY JURY IN ANY JURISDICTION.

SEVERABILITY – In the event that a court of competent jurisdiction determines that a provision or provisions of the invoice, including these Terms and Conditions, is (are) void or unenforceable, such determination shall in no way affect the validity of enforceability of the remaining provisions hereof.

ENTIRE AGREEMENT – These Terms and Conditions, together with any invoice from Waymark, set forth the entire agreement between Waymark and Customer concerning the Products, and may not be changed or modified except in a writing signed by Waymark and Customer. No representations, understandings, or agreements have been made to or relied upon by Customer other than those specifically set forth in the invoice. Customer agrees that Waymark’s Terms and Conditions apply exclusively to the parties’ commercial relationship, unless otherwise agreed upon in a writing signed by Customer and an authorized Waymark representative. By purchasing Waymark’s Products, Customer agrees that any and all terms, conditions or other contractual provisions provided in any writing or communication sent by Customer are null, void, unenforceable, and of no legal effect upon Waymark.